

## **Historic, archived document**

Do not assume content reflects current scientific knowledge, policies, or practices.





# BULBS

for

# 1938

FOR FALL PLANTING

L I F E R Y

R E C O R D

★ JUN 16 1938 ★

U. S. Department of Agriculture.

Advance  
Offering

3

Exquisite  
DAFFODILS

TOP

**CROESUS.** (See page 4.)  
20 cts. each; \$1.50 for 10;  
\$12 per 100

MIDDLE

**DIANA KASNER.** (See page 4.)  
20 cts. each; \$1.50 for 10;  
\$12 per 100

BOTTOM

**HELIOS.** (See page 5.)  
20 cts. each; \$1.50 for 10;  
\$12 per 100

---

## Special Collection Offer

30 bulbs, 10 each of above 3 varieties  
(Value \$4.50) **\$3.50**

60 bulbs, 20 each of above 3 varieties  
(Value \$9.00) **\$6.50**

*Stumpp & Walter Co*

NEW YORK CITY





A partial view of our Spring Garden at the International Flower Show in the Grand Central Palace, New York City, March, 1938, which was awarded the Sweepstake Trophy in the large garden class.

## WHY WE ASK FOR YOUR ORDER BEFORE JULY 15

### *Order Now and Save Money*

As one of the largest growers and importers of American, Dutch, French, and Japanese bulbs in the United States, we have always been very exacting in our quality standards. Many varieties of bulbs are offered in smaller sizes than we handle. While the price difference is small, the quality difference is great. Cheap bulbs are frequently disappointing in the results they produce and are expensive to the planter.

#### TIME OF DELIVERY

Bulbs and roots mature and ripen during the late summer and autumn, and shipments will be made as follows in the absence of instructions to the contrary.

**SEPTEMBER**—includes **Lilium Harrisi**, **Lilium formosum**, **Lilium candidum**, **Freesias**, and **Bulbous Irises**.

**OCTOBER OR MAIN SHIPMENT**—includes the general line of bulbs, such as **Tulips**, **Narcissi**, **Hyacinths**, **Crocus**, and **Miscellaneous Bulbs**.

**NOVEMBER**—includes all **Liliums** with the possible exception of the Japanese variety, **Auratum**. We have, however, endeavored to improve our connections in Japan so that this variety may be received in time to make deliveries in November.

**DECEMBER**—includes **Lily-of-the-Valley** for outdoor planting. **Lily-of-the-Valley** required for growing indoors can be supplied any month in the year from cold storage.

#### PRICES NOW AND LATER

Our contracts are placed at the present exchange rate, which we believe is more likely to be favorable than what it may be later in the autumn. Should our currency be devalued to 50 per cent of its par value, prices will be at least 15 per cent higher in the fall. We therefore suggest your ordering before July 15.

#### TERMS OF PAYMENT

We do not send bulbs C. O. D. unless you request it, but ship your order when bulbs arrive, mailing invoices at the same time, and all bills are due in 30 days, net.

For those who desire to send us cash with the order, and thereby forfeit the use of the interest on the same from the time they send it until bulbs are shipped, we ask that they **deduct a cash discount of 5 per cent from their order to compensate them for this loss.**

**WE FURNISH ALL VARIETIES, 5 of a variety at the 10 rate; 25 of a variety at 100 rate; 250 of a variety at 1000 rate**

NEW YORK PHONES:

BA relay { 7-1110 7-1111 7-1112  
7-1113 7-1114 7-1115

Copyright, 1938, by Stumpp & Walter Co.

*Stumpp & Walter Co.*

132-138 Church Street  
(at Warren)  
NEW YORK CITY

BRANCH STORES: White Plains, N. Y., Newark, N. J., Stamford, Conn., Hempstead, L. I., Englewood, N. J.



# NARCISSUS or DAFFODILS

## Outdoor Culture of Daffodils

Daffodils thrive in good garden soil, preferably deep well-drained loam. Deep preparation of the soil is necessary, and old rotted manure or compost may be worked in 16 to 18 inches below the surface, but must not come in direct contact with the bulbs. **Fresh manure should never be used.**

Plant in the early fall, especially Poeticus types. The more vigorous, larger varieties may be planted as late as December, but early planting is best.

In medium soils, cover the bulbs about twice their depth, and a little deeper in lighter soils. The average for most sorts is 3 to 4 inches from the top of the bulb. Set the bulbs at a uniform depth; otherwise they may flower irregularly.

## Naturalizing

Daffodils planted in clusters in the foreground of shrubbery, or sown broadcast through woodlands, along hillsides, in meadows or lawns, and planted where they fall, give a most pleasing natural effect. They will increase in beauty and number without special care and become permanently established.

In heavy soils the most vigorous varieties should be used. More pleasing effects result from grouping the various types, such as all trumpet types, all Poeticus types, etc.

*NOTE.—In describing Daffodils, Narcissus, etc., we have referred to the "perianth" and "trumpet," "crown" or "cup." The "perianth" is the surrounding row of petals or wings, and the other terms apply to the central funnel-like tube.*

## Culture of Daffodils in Pots or Boxes

Daffodils should be potted in September or October in good loamy soil, adding a little sand or leaf-mold and a small amount of bone-flour. (About 2 pounds to the bushel of soil.)

The old pots must be washed thoroughly and allowed to dry before using. New pots should be soaked. Provide drainage by placing pieces of charcoal or fragments of pots over the drainage hole. A little ground peat in the bottom regulates drainage.

After ten to twelve weeks they may be moved indoors for flowering. Do not bring them into a warm temperature—50° to 60° is best at first. Do not give any bottom heat. Later, when the flower-buds are well advanced, the temperature may be increased to 65°.

When the pots are first brought to the light, the tender shoots may be covered for a day or two with an inverted flower-pot to prevent injury from light or drafts. A little weak liquid manure once a week, until buds burst, will hasten the flowers after growth has started.

Always give them plenty of light and air.

## CLASSIFICATION OF DAFFODILS

Of the Royal Horticultural Society of England.

- |                                                                     |                                                                  |
|---------------------------------------------------------------------|------------------------------------------------------------------|
| <b>1A. Yellow Trumpets.</b> Trumpet and perianth pure yellow.       | <b>3B. Barrii.</b> White perianth.                               |
| <b>1B. White Trumpets.</b> Perianth and trumpet white or nearly so. | <b>4A. Giant Leedsii.</b> Large cup.                             |
| <b>1C. Bicolor Trumpets.</b> Perianth white, trumpet yellow.        | <b>4B. Leedsii.</b> Small cup.                                   |
| <b>2A. Incomparabilis.</b> Yellow perianth.                         | <b>5. Triandrus Hybrids.</b>                                     |
| <b>2B. Incomparabilis.</b> White perianth.                          | <b>6. Cyclamineus Hybrids.</b>                                   |
| <b>3A. Barrii.</b> Yellow perianth.                                 | <b>7. Jonquilla Hybrids.</b>                                     |
|                                                                     | <b>8. Tazetta and Tazetta Hybrids.</b><br>Mostly bunch-flowered. |
|                                                                     | <b>9. Poeticus.</b>                                              |
|                                                                     | <b>10. Double Varieties.</b>                                     |
|                                                                     | <b>11. Various.</b> Botanical species.                           |

## Giant Trumpet Narcissus. Includes New and Rare Sorts

**Division 1.** Distinguishing character, trumpet or crown as long or longer than the perianth.

**AEROLITE.** A short, bright yellow trumpet of lovely form is backed by great broad primrose-yellow petals, making a flower of unusual character.  
20 cts. each; \$1.50 for 10; \$12.00 per 100

**ALASNAM.** Fine, erect Daffodil with wide, short, densely frilled trumpet of pure deep yellow; perianth just a shade lighter.  
35 cts. each; \$3.25 for 10; \$30.00 per 100

**BEERSHEBA.** A magnificent pure white flower. Large, perfectly flat perianth; trumpet long and beautifully flanged at the mouth. A flower of great size, measuring nearly 5 inches across. Vigorous grower and a grand exhibition variety.  
\$2.50 each; \$22.50 for 10

**DAWSON CITY.** Splendid exhibition variety with a broad, flat perianth and a shapely, straight trumpet. The color is golden yellow.  
40 cts. each; \$3.50 for 10; \$30.00 per 100

**DIOTIMA.** Perfect form characterizes this super-giant. The deep primrose perianth measures nearly 6 inches across and carries a great trumpet on 2-foot stems. A variety that will stand out for years to come; one of the finest for exhibition.  
\$3.00 each; \$27.50 for 10; \$250.00 per 100

**EMPEROR.** Perianth deep primrose-yellow; trumpet rich yellow. An old favorite, still extremely popular.

Double-nose Bulbs  
Jumbo. 15c. each; \$1.25 for 10; \$10 per 100  
1st-size. 10c. each; 80c. for 10; \$7.00 per 100

**EMPRESS.** White perianth, contrasting well with a rich chrome-yellow trumpet. Companion variety to Emperor.

Double-nose Bulbs  
Jumbo. 15c. each; \$1.25 for 10; \$10 per 100  
1st-size. 10c. each; 80c. for 10; \$7.00 per 100

**GLORY OF SASSENHEIM.** One of the best of the older Bicolors. Perianth pure white; trumpet rich yellow, nicely frilled.

Double-nose Bulbs  
Jumbo. 15c. each; \$1.25 for 10; \$10 per 100  
1st-size. 10c. each; 80c. for 10; \$7.00 per 100

**GOLDEN HARVEST.** A Giant among the Giants. An early variety with both trumpet and perianth a rich deep yellow.  
\$2.00 each; \$18.00 for 10

**KING ALFRED.** A king among the fine varieties. Rich, lustrous golden yellow throughout. Extremely vigorous in habit. Perianth often measures 4 inches across, trumpet fully 2 inches.

Double-nose Bulbs  
Jumbo. 20c. each; \$1.80 for 10; \$15 per 100  
1st-size. 15c. each; \$1.20 for 10; \$10 per 100  
Early cured for December forcing.  
20 cts. each; \$1.80 for 10; \$15.00 per 100

**LA VESTALE.** Pure ivory perianth, with trumpet of deep creamy yellow. Early flowering and exceptionally tall and vigorous. 25c. each; \$2.25 for 10; \$20.00 per 100

**LIBERTY.** Perianth and trumpet an even shade of rich yellow. A fine strong-growing variety of good size.  
20 cts. each; \$1.90 for 10; \$18.00 per 100

**LORD WELLINGTON.** This and Diotima are the largest and most outstanding of the yellow Trumpets. The flower is a rich self golden yellow with broad perianth petals and large trumpet.  
50 cts. each; \$4.50 for 10; \$40.00 per 100

**LOVE NEST.** A delightfully charming example of the "Pink Daffodil." Starry shaped perianth of informal type; trumpet saffron-yellow, turning apricot-pink. Medium height, and early. Most unusual.  
90 cts. each; \$8.00 for 10; \$75.00 per 100

**MME. VAN WAVEREN.** A decided acquisition to the large Trumpet varieties. When well grown it is a flower of gigantic size. Deep golden yellow trumpet with broad overlapping perianth of the purest white. A leading exhibition variety.  
\$1.00 each; \$9.00 for 10; \$85.00 per 100

**MRS. R. O. BACKHOUSE.** The famous original "Pink Daffodil." Beautifully proportioned perianth of ivory-white; long, graceful trumpet of apricot-pink, changing to shell-pink at the deeply fringed edge. Beautiful, long lasting, and early flowering.  
\$2.50 each; \$22.50 for 10

**MRS. ERNEST H. KRELAGE.** Considered one of the finest pure white Trumpet Daffodils. Even tone of pure white throughout. Free flowering and of outstanding vigor. Double-nose Jumbo Bulbs.  
20 cts. each; \$1.90 for 10; \$18.00 per 100

**OLYMPIA.** Perianth light chrome-yellow; huge trumpet of deep chrome-yellow, heavily ruffled. Fully equal to King Alfred.  
15 cts. each; \$1.40 for 10; \$12.00 per 100

**ROBERT E. LEE.** Huge lemon-yellow trumpet, beautifully frilled, 2 inches across; perianth pure white. Excellent stem; free-flowering. Splendid exhibition variety.  
\$4.00 each; \$35.00 for 10; \$325.00 per 100

**ROBERT SYDENHAM.** Very broad and overlapping perianth of a clear primrose-yellow; long, bold, beautifully imbricated trumpet of deep, rich yellow. Jumbo Bulbs.  
20 cts. each; \$1.80 for 10; \$15.00 per 100

**ROXANE.** One of the newer white varieties that promises to be more popular when stocks are larger. Large, creamy white trumpet with round, overlapping, pure white perianth. \$1.00 each; \$9.00 for 10

**SPRING GLORY.** Clear white informal type perianth; long trumpet of deep yellow, reflexing at the edge.  
Double-nose Bulbs

Jumbo. 15c. each; \$1.25 for 10; \$10 per 100  
1st-size. 10c. each; 80c. for 10; \$7.00 per 100

**THE FIRST.** Sulphur-yellow trumpet with perianth of the same color. A very early variety and a robust grower. Excellent for early forcing.  
20 cts. each; \$1.80 for 10; \$15.00 per 100

**TRESERVE.** Perianth primrose-yellow; large canary-yellow trumpet. Double-nose Jumbo Bulbs.  
15 cts. each; \$1.40 for 10; \$12.00 per 100

**VAN WAVEREN'S GIANT.** Huge semi-Bicolor Trumpet. Perianth creamy white; trumpet bright, rich yellow. Vigorous and showy. Double-nose Jumbo Bulbs.  
25 cts. each; \$2.00 for 10; \$18.00 per 100

**WHISTLER.** A giant deep yellow trumpet with a somewhat lighter perianth. Exhibition.  
25 cts. each; \$2.25 for 10; \$20.00 per 100

## MEDIUM TRUMPET Narcissus or Daffodils

This is one of the most popular types of the Narcissus or Daffodil family, and under this heading we have listed Divisions 2, 3, and 4. Many of the so-called "red cups" occur in this type.

**Division 2. Incomparabilis.** Distinguishing character, cup or crown not less than one-third but less than equal to the length of the perianth segments.

**Division 3. Barrii.** Distinguishing character, cup or crown less than one-third the length of the perianth segments.

**Division 4. Leedsii.** Distinguishing character, perianth white and cup or crown white, cream, or pale citron, sometimes tinged with pink or apricot.

**AGRA.** (Incomparabilis.) One of the finest of the new Incomparabilis Daffodils. Broad, overlapping, creamy white perianth of good substance, with a large, bright orange crown.  
\$6.00 each; \$55.00 for 10

**ALBATROSS.** (Barrii.) Large, flat, white perianth; cup pale citron, with a ribbon edge of scarlet. A fine large flower.  
10 cts. each; 80 cts. for 10; \$7.00 per 100

**ALCIDA.** (Barrii.) Deep yellow cup and ivory-white perianth 3½ inches across. A lovely flower.  
20 cts. each; \$1.80 for 10; \$15.00 per 100

**AUTOCRAT.** (Incomparabilis.) Clear golden yellow throughout. Cup widely expanded at the mouth, with broad perianth. A superb light yellow Narcissus for naturalizing.  
10 cts. each; 80 cts. for 10; \$7.00 per 100

**BATH'S FLAME.** (Barrii.) Deep yellow; cup deeply edged orange-red. A giant flower and one of the good Barrii Daffodils.  
15 cts. each; \$1.40 for 10; \$12.00 per 100

**BERNARDINO.** (Incomparabilis.) Large flower; perianth creamy white; cup pale lemon-yellow, very heavily frilled, flushed and edged pinkish apricot in cool, dark weather.  
10 cts. each; 90 cts. for 10; \$8.00 per 100

**CARLTON.** (Incomparabilis.) A giant among the newer Incomparabilis. Clear soft yellow, with broad, overlapping petals, and enormous cup with daintily frilled edge.  
\$2.00 each; \$18.00 for 10

**CONSPICUUS.** (Barrii.) Perianth of pale yellow; short darker yellow cup, edged orange-scarlet. An old variety and a good one. It is a splendid permanent variety.  
10 cts. each; 70 cts. for 10; \$6.00 per 100

**COPPER BOWL.** (Incomparabilis.) Clear sunny yellow with broad, beautifully shaped petals; the crown deep yellow, stained a lively orange. Winner in the best Medium Trumpet Class at the Westbury Spring Daffodil Show held at the Horticultural Society of New York, April, 1936. First exhibited in this country by us.  
\$8.00 each; \$75.00 for 10

**CROESUS.** (Incomparabilis.) Truly a magnificent variety. Pale primrose perianth, with thick, overlapping petals; widely expanded crown, heavily suffused and stained deep orange-red when the weather is cool and dark.  
20 cts. each; \$1.50 for 10; \$12.00 per 100

**DAISY SCHAFFER.** (Leedsii.) Broad, overlapping perianth of pure white with a flaring cup of pale yellow, edged darker. A great exhibition flower.  
\$4.00 each; \$35.00 for 10

**DIANA KASNER.** (Barrii.) Pure white perianth; large yellow cup with blood-red frill. Free-flowering and an excellent forcer.  
20 cts. each; \$1.50 for 10; \$12.00 per 100

**DICK TURPIN.** (Barrii.) Round, flat perianth of ivory-white and a flat deep red eye. Always dependable.  
\$1.50 each; \$12.50 for 10

**DICK WELLBAND.** (Incomparabilis.) A striking cup of the deepest orange-red nestles against overlapping white petals. Splendid growth.  
\$2.00 each; \$18.00 for 10

### SPECIAL COLLECTION OFFER

SIX DAFFODILS pictured in color

Bernardino. White Incomparabilis. Olympia. Yellow Trumpet.  
Golden Sceptre. Yellow Jonquil. Sir Watkin. Yellow Incomparabilis.  
King Alfred. Yellow Trumpet. Whitewell. White Incomparabilis.

30 bulbs, 5 of each **\$2.50** (value \$3.10) 60 bulbs, 10 of each **\$4.50** (value \$6.20)



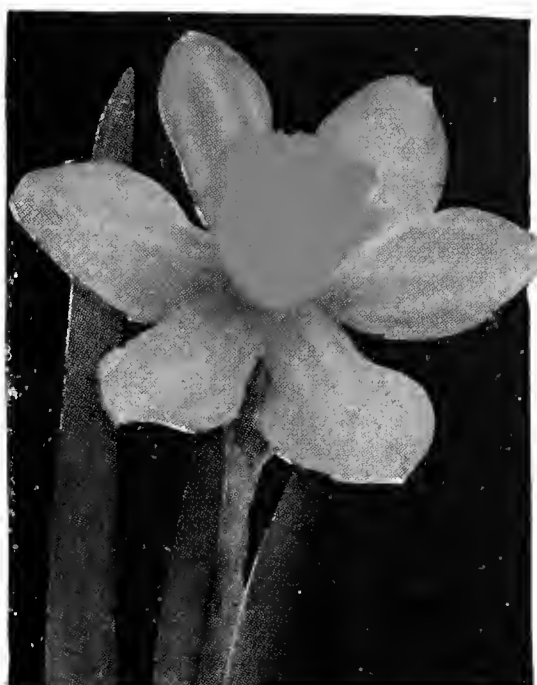




GOLDEN SCEPTRE



BERNARDINO



SIR WATKIN



WHITEWELL

### MEDIUM TRUMPET NARCISSUS, continued

**DORINE.** (Incomparabilis.) A favorite at all important Daffodil shows. Beautiful overlapping perianth of pure creamy white, with a large, striking deep orange cup.

\$2.50 each; \$22.50 for 10

**DUCHESS OF WESTMINSTER.** (Leedsii.) Pure white perianth; cup pale canary-yellow, slightly darker at the edge.

10 cts. each; 95 cts. for 10; \$8.00 per 100

**FIRE TAIL.** (Barrii.) Perianth creamy white; large cup of bright orange, edged and frilled scarlet-orange.

25 cts. each; \$2.25 for 10; \$20.00 per 100

**FORTUNE.** (Incomparabilis.) Broad, creamy yellow perianth of a very solid texture; crown of great size, elegant form, beautifully frilled, and of a glowing soft orange.

\$6.00 each; \$55.00 for 10

**FRANCISCA DRAKE.** (Incomparabilis.) An exhibition variety with a broad snowy white perianth and a wide flame-orange cup.

70 cts. each; \$6.50 for 10; \$60.00 per 100

**GALLIPOLI.** (Incomparabilis.) Large pale yellow perianth and red-frilled crown of deep glowing orange. A spectacular flower.

45 cts. each; \$4.00 for 10; \$35.00 per 100

**GALOPIN.** (Incomparabilis.) The broad, overlapping petals are of purest white, with a deep orange-red cup. Flowers are large and carried on tall, strong stems.

\$2.00 each; \$17.50 for 10

**GERTIE MILLAR.** (Leedsii.) Perianth pure white with a gracefully proportioned crown of pale primrose.

60 cts. each; \$5.50 for 10; \$50.00 per 100

**HAVELOCK.** (Incomparabilis.) A self color of clear yellow, the overlapping petals very broad with a flaring cup of perfect balance. A long-lasting flower.

\$4.00 each; \$35.00 for 10

**HELIOS.** (Incomparabilis.) Creamy yellow, star-shaped perianth; pale orange cup, slightly frilled. A very striking variety.

20 cts. each; \$1.50 for 10; \$12.00 per 100

**INVINCIBLE.** (Incomparabilis.) Perianth pure white, with a large, flat yellow crown, having a striking broad orange margin.

75 cts. each; \$7.00 for 10; \$60.00 per 100

**IRENE BORDONI.** (Incomparabilis.) Lovely cream-yellow perianth with a fine red cup. Sturdy growth. A choice variety for cutting and exhibition.

\$2.00 each; \$18.00 for 10

**JOHN EVELYN.** (Incomparabilis.) A pure white perianth and lemon-yellow cup, fluted to the base, make the flower one of the greatest Daffodils of today.

25 cts. each; \$2.20 for 10; \$20.00 per 100

**JUPITER.** (Incomparabilis.) An orange cup against a deep yellow perianth forms a splendid long lasting flower.

\$3.00 each; \$27.50 for 10

**KILLIGREW.** (Incomparabilis.) Much admired at the important Daffodil shows. Perianth a rich deep yellow, with a large orange-red cup. \$3.00 each; \$27.50 for 10

**KILTER.** (Barrii.) Pure snowy white perianth of excellent substance and large size, with a flat, deep red eye.

\$2.00 each; \$18.00 for 10

**LADY DIANA MANNERS.** (Barrii.) Broad, white perianth and a large, flat orange crown, broadly margined with deep red.

45 cts. each; \$4.00 for 10; \$35.00 per 100

**LORD KITCHENER.** (Leedsii.) Broad, strongly petaled perianth of pure white; cup nicely fluted, pale lemon-yellow.

15 cts. each; \$1.20 for 10; \$10.00 per 100

**LUCINIUS.** (Incomparabilis.) The cup is very large and is deep, rich yellow, with a perianth of lighter yellow.

20 cts. each; \$1.75 for 10; \$15.00 per 100

**MERKARA.** (Incomparabilis.) The unusually flat, overlapping perianth is sulphur-yellow and the large, expanded crown is a deep orange-red throughout.

\$3.00 each; \$27.50 for 10

**MERRYHILL.** (Incomparabilis.) One of those rich-looking combinations of a creamy perianth and an orange cup.

\$10.00 each

**MILFORD HAVEN.** (Incomparabilis.) Overlapping creamy white perianth with a yellow cup with orange margin.

60 cts. each; \$5.00 for 10; \$40.00 per 100

**MRS. BARCLAY.** (Barrii.) Perianth pale primrose changing to white; cup primrose-yellow, margined orange picotee.

25 cts. each; \$2.25 for 10; \$20.00 per 100

**MRS. LANGTRY.** (Leedsii.) A chaste white perianth and a cup which opens pale primrose but changes to white.

10 cts. each; 80 cts. for 10; \$7.00 per 100

**MRS. NETTE O'MELVENY.** (Leedsii.) Pure white perianth, with clear lemon-yellow cup, and orange picotee edge.

15 cts. each; \$1.40 for 10; \$12.00 per 100

**NANNIE NUNN.** (Barrii.) Cup vivid orange-scarlet, perianth cream-white.

15 cts. each; \$1.40 for 10; \$12.00 per 100

**NOBILITY.** (Barrii.) The overlapping petals are a creamy white, with flat, deep orange-red crown.

25 cts. each; \$2.25 for 10; \$20.00 per 100

**ORANGE GLOW.** (Incomparabilis.) Broad, flat perianth often 5 inches across; the cup deep glowing orange, beautifully frilled.

\$1.50 each; \$12.50 for 10

**PRINCESS ASTRID.** (Barrii.) A popular variety with a splendid primrose perianth and orange-tinted cup.

\$1.00 each; \$9.00 for 10

**PRINCESS MIRIAM.** (Barrii.) A beautiful and substantial flower with a pure white, rounded perianth and a tiny yellow eye edged with red. \$1.00 each; \$9.00 for 10

**QUEEN OF THE NORTH.** (Leedsii.) Broad white perianth; cup soft primrose-yellow, edged sulphur-white.

10 cts. each; 80 cts. for 10; \$7.00 per 100

**RED BEACON.** (Barrii.) Broad white perianth of splendid substance, with broad, well-frilled cup of dazzling orange-scarlet.

10 cts. each; 90 cts. for 10; \$8.00 per 100

**RED CHIEF.** (Barrii.) Perianth pure white, with a somewhat flattened cup or crown having a fiery orange margin.

20 cts. each; \$1.50 for 10; \$12.00 per 100

**RED CROSS.** (Incomparabilis.) Primrose-yellow perianth and a deep yellow cup, with ruffled edge of deep orange.

50 cts. each; \$4.50 for 10; \$40.00 per 100

**RED SHADOW.** (Barrii.) Broad overlapping petals of dainty primrose and a cup of deep yellow edged rich orange.

\$1.50 each; \$12.50 for 10

**RICHARD M. TOBIN.** (Incomparabilis.) Large, star-shaped perianth with a nicely fluted orange-red cup.

25 cts. each; \$2.00 for 10; \$15.00 per 100

**SCARLET LANCER.** (Incomparabilis.) One of the most pleasing and refined Daffodils. Pure white perianth and fiery orange cup which keeps its color in full sunshine.

\$1.50 each; \$12.50 for 10

**SERAGLIO.** (Barrii.) The well-overlapping, creamy white perianth holds forth a well-proportioned cup of deep orange-scarlet. Splendid exhibition variety.

\$4.00 each; \$35.00 for 10

**SILVER STAR.** (Leedsii.) Broad perianth of pure white; wide, deep trumpet of cream-white, turning almost pure white.

20 cts. each; \$1.80 for 10; \$15.00 per 100

**SIR WATKIN.** (Incomparabilis.) Perianth primrose-yellow; large and well-formed yellow cup, tinted deep yellow. A giant.

Double-nose Bulbs

Jumbo. 12c. each; \$1.00 for 10; \$9.00 per 100

1st-size. 10c. each; 90c. for 10; \$8.00 per 100

**VARNA.** (Barrii.) Perianth rich golden yellow, with broad, overlapping petals, and a large, flat crown of glowing crimson-red. A striking variety for exhibition.

\$6.00 each; \$55.00 for 10

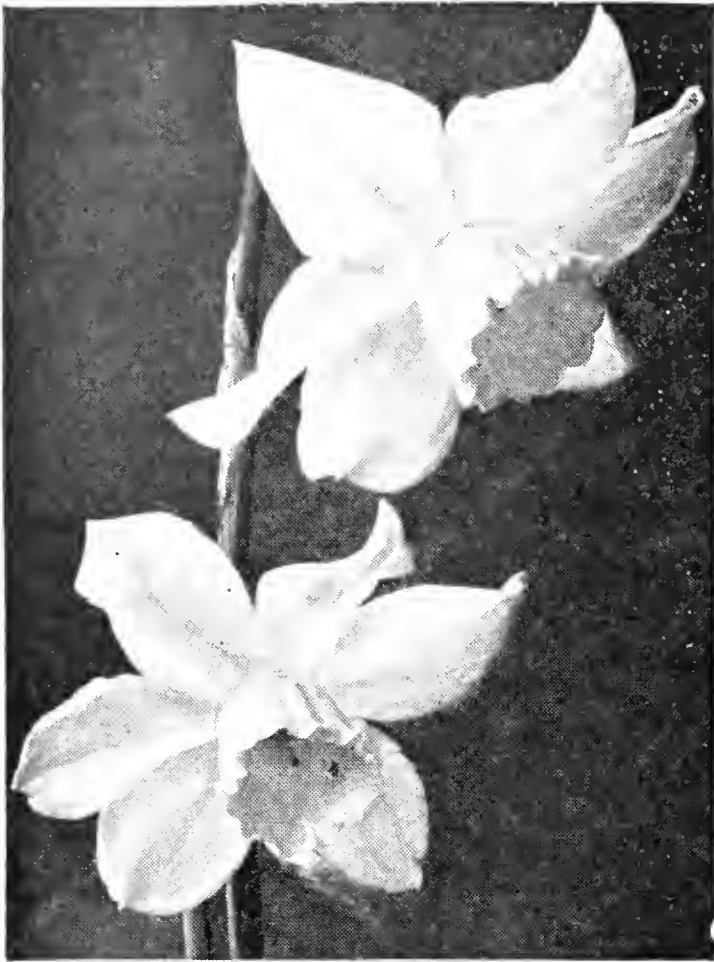
**WHITEWELL.** (Incomparabilis.) Star-shaped perianth of pure white, the pale yellow cup with an orange edging.

10 cts. each; 90 cts. for 10; \$8.00 per 100

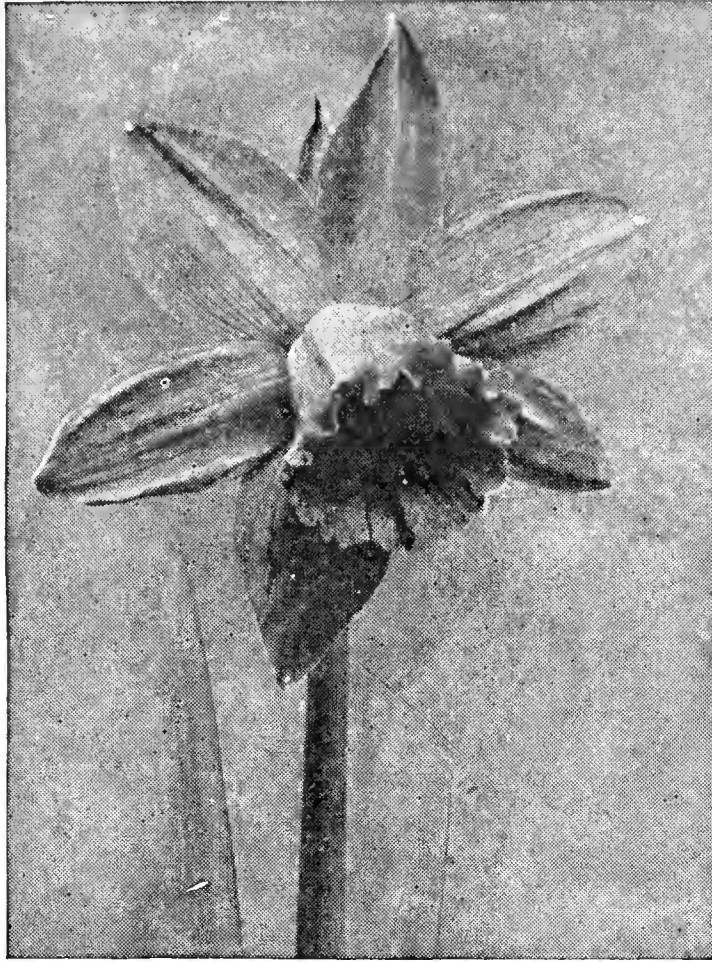
**YELLOW POPPY.** (Incomparabilis.) Except for a narrow red edge to the cup, this is a self color as both cup and petals are a lovely shade of soft yellow. Early and free.

15 cts. each; \$1.40 for 10; \$12.00 per 100

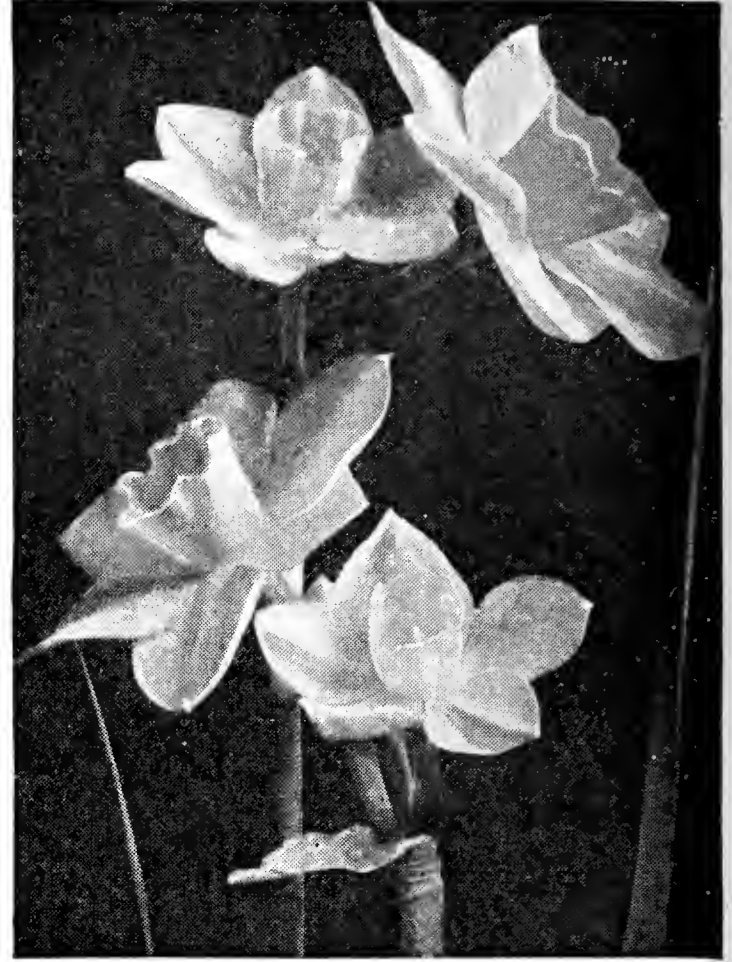




Triandrus, Agnes Harvey



Cyclamineus, February Gold



Jonquilla, Giant Campernelle Rugulosus

## Triandrus and Triandrus Hybrids

**Division 5.** Dainty, cyclamen-flowered Daffodils with reflexing petals. The drooping habit of the flowers, their unique and graceful appearance and small size, make them ideal for the rock-garden.

**TRIANDRUS ALBUS (Angel's Tears).** A graceful garden subject, requiring shade, good drainage, and a gritty soil. It grows less than 6 inches high and its narrow, creamy white perianth segments recurve sharply upward from its drooping cup. Two or three flowers are clustered on one stem.

20 cts. each; \$1.80 for 10; \$15.00 per 100

**AGNES HARVEY.** Pure white perianth, sharply reflexed, with the trumpet sometimes faintly flushed apricot. Gives one to three flowers on each stem. It is the purest white of the class.

25 cts. each; \$2.25 for 10; \$20.00 per 100

**MOONSHINE.** A delightfully informal little flower of creamy white with a fluted trumpet that is perfection. There are 2 or 3 of these exquisite, fragrant flowers on each plant.

40 cts. each; \$3.50 for 10; \$30.00 per 100

**MRS. ALFRED PEARSON.** Clusters of star-shaped flowers with white perianths and pale primrose cups.

25 cts. each; \$2.25 for 10; \$20.00 per 100

**QUEEN OF SPAIN.** The delicately formed, gracefully drooping flowers are soft canary-yellow. Its graceful form varies, some of the flowers having a pronounced trumpet longer than is usually expected in this type.

25 cts. each; \$2.25 for 10; \$20.00 per 100

**THALIA.** Frequently called the orchid-flowered Daffodil. The beautiful pure white flowers are carried three or four to a stem and are most attractive for either indoor decoration or planting in the rock-garden.

25 cts. each; \$2.25 for 10; \$20.00 per 100

## Cyclamineus and Cyclamineus Hybrids

**Division 6.** As dainty and interesting and as ideally suited for rock-gardens as the Triandrus Hybrids. The trumpets are rich yellow, straight, and tube-like, with the perianth petals sharply reflexed as in a cyclamen. Very early flowering.

**CYCLAMINEUS.** Pure rich yellow little Daffodil beginning to flower in mid-February. Delights in damp roots in the rock-garden, similar to its native habitat in Spain, where it is found bordering mountain streams and in flooded meadows. The perianth is very small and the narrow segments so tightly reflexed that they lie straight back along the stem.

40 cts. each; \$3.50 for 10; \$30.00 per 100

**FEBRUARY GOLD.** Earlier than the type, with golden yellow perianth and trumpet tinged orange.

25 cts. each; \$2.00 for 10; \$18.00 per 100

**ROCKERY BEAUTY.** The small trumpet is canary-yellow, and the perianth is a pure white. The stem attains the height of about 6 inches. A real gem for rock-gardens.

20 cts. each; \$1.80 for 10; \$15.00 per 100

## Jonquilla and Jonquilla Hybrids

**Division 7.** Under this class we have listed the Jonquil and its hybrids. They have a grace and charm that makes them extremely popular. The varieties Buttercup, Golden Sceptre, Lady Hillingdon, and Tullus Hostilius are hybrid types and are the results of crossing the bunch-flowering Single Jonquils with the Trumpet Daffodils. While some of these varieties frequently come with one flower, instead of four or five as in the case of Campernelle Rugulosus, they have retained the charm of the Jonquil as well as added the trumpet characteristic of the Trumpet Daffodils. These new hybrid types are excellent for the border as well as for cutting for home decoration.

**BUTTERCUP.** Similar to Golden Sceptre. A clear buttercup-yellow, somewhat lighter in color than that wonderful variety, and with a straighter trumpet. A cross between Emperor and Jonquilla.

15 cts. each; \$1.20 for 10; \$10.00 per 100

**GOLDEN SCEPTRE.** This free-flowering hybrid is very handsome. Its fine, elegant flowers are a deep Jonquil-yellow, 3 inches or so in diameter. The perianth is star-shaped, just a shade lighter in coloring than the trumpet, which is slightly rolled and flaring at the mouth. The whole flower, as with others in this class, is of greatest substance, keeping in perfect condition exceptionally long.

10 cts. each; 90 cts. for 10; \$8.00 per 100

**GIANT CAMPERNELLE RUGULOSUS.** Beautiful, single, star-shaped flowers, borne in clusters of four to six; delicately fragrant. Much larger and finer than the old favorite Campernelle Jonquil. This is charming when used to border a path or in clumps against a large dark rock in the lower region of the rock-garden.

10 cts. each; 90 cts. for 10; \$8.00 per 100

**JONQUILLA SIMPLEX.** The true original single sweet Jonquil, bearing clusters of small, rich yellow flowers in May; extremely fragrant. Many people apply the word "Jonquil" to the large, trumpet-flowered type which is the true Daffodil. Make no mistake about it, the genuine Jonquil is a small, very deep yellow flower, very sweetly scented, and always borne in clusters. The foliage differs considerably from Daffodils and other Narcissus because it is slender, grass-like, and almost tubular, resembling that of some rushes. In truth, the botanical name of this class is sometimes given as *Narcissus juncifolius*, which means "rush-leaved," and the name Jonquil itself is a corruption of "junculus," the Latin word for a little rush.

15 cts. each; \$1.25 for 10; \$10.00 per 100

**RUGULOSUS, DOUBLE.** Double form of the Giant Campernelle Rugulosus. Large, double, yellow flowers; very fragrant.

10 cts. each; 90 cts. for 10; \$8.00 per 100

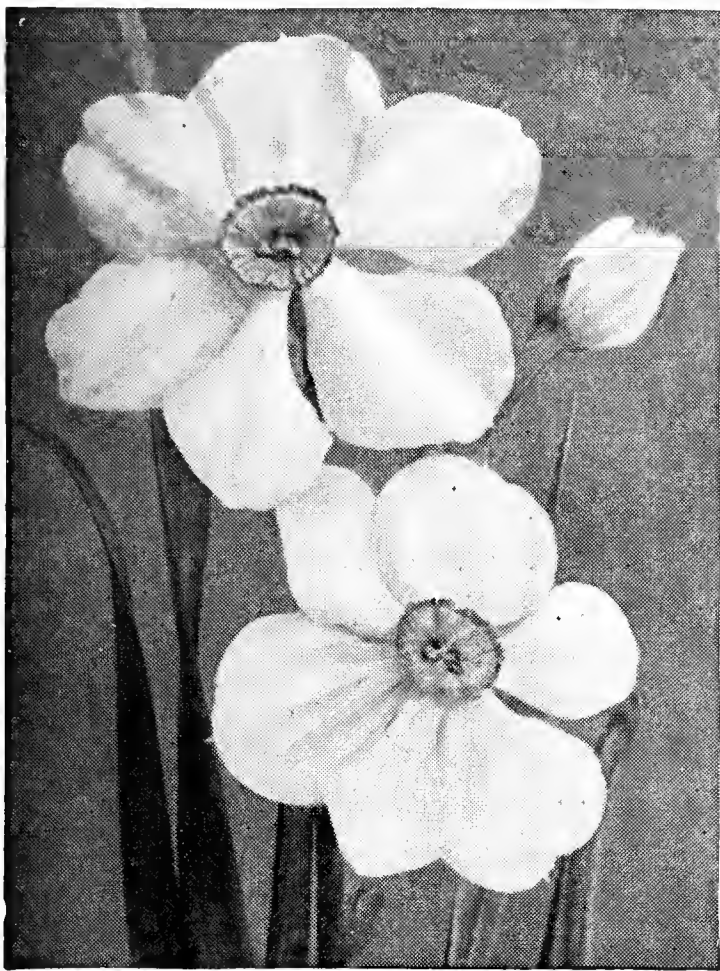
**LADY HILLINGDON.** Blooms earlier than Golden Sceptre. Usually cluster-flowering, but sometimes bears its blooms single. The perianth is butter-yellow and the short, straight trumpet deeper yellow. Very tall and vigorous.

75 cts. each; \$7.00 for 10; \$65.00 per 100

**TULLUS HOSTILIUS.** Pronounced Trumpet type, rich Jonquil-yellow throughout. Lasts exceptionally long when cut.

15 cts. each; \$1.20 for 10; \$10.00 per 100

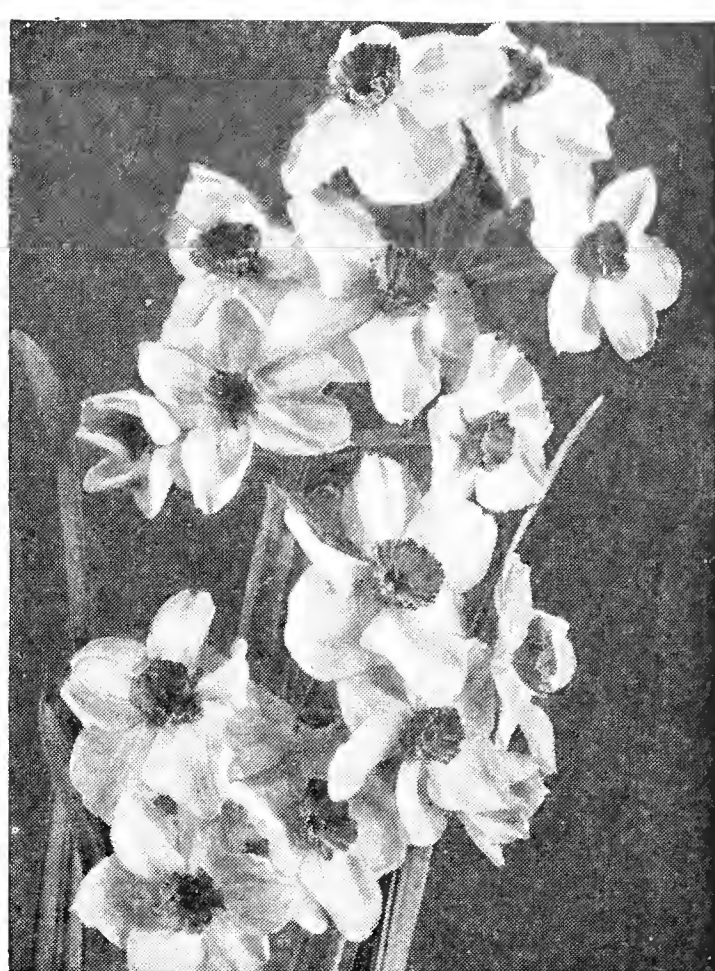




Poeticus, Horace



Bulbocodium conspicuus and Triandrus albus



Poetaz, Orange Cup

## The Poet's Narcissus

### *Narcissus Poeticus*

**Division 9.** This class of Narcissus, instead of having a trumpet or crown, has a small, wide-mouthed cup. They are very hardy, and are used in large numbers for naturalizing, their simplicity of form and the refined character of their blooms making them excellent flowers for cutting.

**ACTÆA.** The largest and most beautiful of the new Poeticus. Pure white perianth; broad, overlapping petals with a flat lemon-yellow cup frilled deep red.

40 cts. each; \$3.50 for 10; \$30.00 per 100

**HOMER.** This variety, like Horace, is one of the better types of Poet's Narcissus. Perianth pure white; cup canary-yellow, rimmed bright red. Excellent variety for forcing because of the large size of the flower, and length of stem.

15 cts. each; \$1.20 for 10; \$10.00 per 100

**HORACE.** This variety, like Homer, is one of the better types of the Poet's Narcissus. Perianth pure white; cup canary-yellow, rimmed bright red.

10 cts. each; 80 cts. for 10; \$8.00 per 100

**ORNATUS.** Pure white flowers; saffron cup, tinged rosy scarlet. Larger than the old original Poeticus, and earlier in bloom. Can be forced without difficulty.

10 cts. each; 80 cts. for 10; \$7.00 per 100

**PHEASANT'S EYE.** The original late-flowering Pheasant's Eye variety popular for gardens and naturalizing. Pure white flowers with orange cup, edged red.

10 cts. each; 70 cts. for 10; \$6.00 per 100

## Tazetta and Tazetta Hybrids

**Division 8.** Under this class of Narcissus we have two very popular types—Tazetta or the original Bunch-flowering Narcissus which can be grown in the house in pebbles and water, such as the Paper-White, Chinese Sacred, and Grand Soleil d'Or listed on the following page, and the increasingly popular hybrid type known as Poetaz, which are now extensively planted in gardens on account of the mass effect of their blooms.

## Poetaz

### The Hardy Cluster-flowered Poet's Narcissus

The chief characteristic of this type of Narcissus is that hybridizers by crossing the strong-scented Polyanthus varieties with the Poeticus type, developed a hardy strain of Daffodils which has the bunch-flowered character of the Polyanthus with larger flowers similar to the Poet's described on this page. They are excellent for pot-culture and are splendid for the garden border.

**ADMIRATION.** Sulphur-yellow perianth; sulphur-yellow eye with scarlet-red border. A beautiful variety in every way.

20 cts. each; \$1.90 for 10; \$18.00 per 100

**ASPASIA.** Perianth pure white, with soft yellow eye; three or four flowers on a stem.

10 cts. each; 80 cts. for 10; \$7.00 per 100

**ELVIRA.** Clusters of 3 or 4 large flowers with broad white petals and bright yellow cups thinly edged orange. One of the loveliest of a lovely family.

10 cts. each; 90 cts. for 10; \$8.00 per 100

**GLORIOUS.** Pure white, broad, overlapping petals, with really brilliant scarlet cup. Free-flowering. Recommended as the finest Poetaz in cultivation. Tall and robust in the garden; excellent for forcing.

\$1.00 each; \$9.00 for 10; \$85.00 per 100

**KLONDYKE.** Perianth pure bright yellow, with golden yellow eye. Vigorous and remarkably free-flowering. This is probably the most useful yellow-flowered Poetaz type, holding its color without fading as much as the other yellow types of this class.

10 cts. each; 80 cts. for 10; \$7.00 per 100

**LAURENS KOSTER.** Perianth pure white, with soft yellow eye. Robust growers, and probably the best of the older varieties for general garden planting.

10 cts. each; 80 cts. for 10; \$7.00 per 100

**MAJESTIC.** Bright yellow cup, making a nice contrast with the finely formed snowy white perianth.

15 cts. each; \$1.20 for 10; \$10.00 per 100

**ORANGE CUP.** A really bright, sunny Poetaz. Perianth even yellow; cup bright orange. Greatly admired by all.

15 cts. each; \$1.20 for 10; \$10.00 per 100

## Miniature Daffodils

### for the Rock-Garden

**Division 11.** Several of the botanical species of Daffodils are very tiny, making the rock-garden the logical place to use them. For this purpose they are ideal. In addition to the varieties listed below, we suggest the use of Division 5, the Triandrus and Triandrus Hybrids (page 6), and Division 6, the Cyclamineus and Cyclamineus Hybrids (page 6) as especially suited for rock-garden planting.

**BULBOCODIUM CONSPICUUS.** The yellow Hoop Petticoat. Rich golden yellow blooms, with rush-like foliage, growing 6 inches tall. Begins to bloom in late February. Prefers a damp, sandy, peat soil; withhold moisture in summer.

12 cts. each; \$1.00 for 10; \$9.00 per 100

**BULBOCODIUM MONOPHYLLUS.** The White Hoop Petticoat. Exquisite little flowers of snowy white brave the cold winds of early spring on 6-inch stems. Give them a sandy peaty soil and plenty of water while in growth.

20 cts. each; \$1.80 for 10; \$15.00 per 100

**GLITTER.** This beautiful subject for the rock-garden resembles in type the Poeticus Narcissus. Perianth and cup are deepest golden yellow, with glittering red edges. The flowers are borne on stems 8 inches high. An excellent variety for the rock-garden.

15 cts. each; \$1.40 for 10; \$12.00 per 100

**W. P. MILNER.** Low-growing, pure white Trumpet, very free-flowering, and highly recommended for rock-gardens and naturalizing.

## Other Varieties Suitable for Rock-Gardens. See page 6

Triandrus Albus  
Triandrus, Agnes Harvey  
Triandrus, Queen of Spain  
Cyclamineus  
Cyclamineus, February Gold  
Jonquilla Simplex

# Double Narcissus

**Division 10.** The newer varieties of Double Daffodils are extremely handsome. The variety Twink was very much admired in our exhibit at the New York Flower Show this past March. They make a fine display in the garden and are excellent for cutting.

**ARGENT.** Very pale primrose perianth with a double row of white petals and fragments of a chrome-yellow cup mixed with them. A double Incomparabilis. 10 cts. each; 80 cts. for 10; \$7.00 per 100

**CHEERFULNESS.** A fine double white Poetaz. Perianth creamy white; cup creamy yellow, making a distinct rosette in the center of each flower. A fine garden and exhibition variety that is very free-blooming and has a delightful fragrance. 20 cts. each; \$1.50 for 10; \$12.00 per 100

**DAPHNE.** A large, double flower of pure white, carrying delicious fragrance. Splendid forcing variety. \$1.00 each; \$9.00 for 10

**INDIAN CHIEF.** One of the new Doubles. Bright yellow, interspersed with orange; very large and very double; petals curled and twisted. 40 cts. each; \$3.80 for 10; \$35.00 per 100

**MARY COPELAND.** Already famous, considered one of the most outstanding of the new semi-double varieties. The longer perianth petals are pure cream-white, with a golden ray through the center, blending with the cup petals of brilliant orange and lemon. Splendid for exhibition. \$1.00 each; \$9.00 for 10; \$80.00 per 100

**SNOWSPRITE.** A fine double Leedsii Daffodil, somewhat resembling a gardenia. Flowers are pure white, suffused light lemon, and carried on tall, strong stems. Very late flowering. 20 cts. each; \$1.80 for 10; \$16.00 per 100

**TEXAS.** A companion variety to Mary Copeland. Pale yellow, interspersed with brilliant orange, making a wonderful showing. Very tall, of fine form, and late in flowering. \$2.50 each; \$22.50 for 10

**TWINK.** Destined to be the most popular of Double Daffodils. Semi-double in type, with alternating petals of primrose and clear orange, each whorl of petals symmetrically centered over the other. It has none of the confused appearance common to older inferior doubles of this class. Flowers very early in the garden and is particularly suited for forcing. Outstanding exhibition variety. 20 cts. each; \$1.80 for 10; \$17.00 per 100

# Polyanthus Narcissus

## BUNCH-FLOWERING

VARIETIES FOR EARLY INDOOR GROWING.  
Not for outdoor planting, except south of the Carolinas

*Ready for Delivery October 1*

We are offering three varieties of this splendid type of Narcissus which are now universally grown indoors in pots of fiber or soil as well as in pebbles and water. The varieties are Paper-White Grandiflora, the popular bunch-flowering white variety, Grand Soleil d'Or, the popular yellow bunch-flowering variety, and Chinese Sacred Lilies or *Narcissus polyanthus orientalis*.

Dishes of these grown in pebbles and water, may be had in bloom continuously from Thanksgiving until Easter. The best method is to keep your bulbs in the containers in which they are shipped to you and to store them in a moderately cool, dry place. Plant different lots every three weeks from October 1 until March 1, and you can enjoy a constant succession of bloom.

**CHINESE SACRED** (*N. polyanthus orientalis*). Frequently referred to as the Chinese Sacred Lily. The flowers are similar to the following variety, Grand Soleil d'Or, except that the perianth is white while the cup is golden yellow. This bunch-flowering type may be grown in pebbles and water, similar to Grand Soleil d'Or and the Paper-White Narcissus. Mammoth Bulbs. 10 cts. each; 80 cts. for 10; \$7.00 per 100

**GRAND SOLEIL D'OR.** This popular bunch-flowering variety of the Polyanthus type is as easy to grow in pebbles and water as in soil or our Shurgrow Bulb Fiber. The flowers are a clear sunny yellow, with bright orange cups. 15 cts. each; \$1.40 for 10; \$12.00 per 100

**PAPER-WHITE GRANDIFLORA.** The popular bunch-flowering pure white Narcissus, frequently having thirty individual blooms and splendid decorative foliage from a single bulb. First-size Bulbs. 5 cts. each; 45 cts. for 10; \$4.00 per 100  
Jumbo Bulbs. 7 cts. each; 50 cts. for 10; \$4.50 per 100

NEW  
NARCISSUS  
*Twink*  
20¢ each \$1.80 for 10  
\$17.00 per 100





AFTERGLOW

LA TRISTESSE

PRINCESS ELIZABETH

SNOWSTORM

F. SANDERS

## *Creating Color Contrasts*

**L**ATE-FLOWERING TULIPS are most effective in a Tulip border if clumps or blocks of 20 to 40 of each variety are planted. The five varieties which we picture above have been especially chosen for their distinct color and blooming qualities. These will make a pleasing color contrast. They may be arranged in the border in clump formation, the clumps so arranged at planting-time as to leave irregular spaces at the edges of the border in order that pansy plants may be set out in early April, to provide a pleasing low-growing border planting. The varieties featured above are illustrated in the following order:

**AFTERGLOW.** A glorious combination of deep rosy orange and salmon. 60 cts. for 10; \$5.00 per 100

**LA TRISTESSE.** A deep shade of slaty blue. 60 cts. for 10; \$5.00 per 100

**PRINCESS ELIZABETH.** A glorious pink Tulip differing from other varieties in its vividness of color. 60 cts. for 10; \$5.00 per 100

**SNOWSTORM.** A giant snow-white Darwin Tulip. 80 cts. for 10; \$7.00 per 100

**FARNCOMBE SANDERS.** Vivid shade of scarlet. Large, cup-shaped flowers on fine strong stems. One of the best among the reds for border planting and equally good when used in clumps and the shrubbery border. 60 cts. for 10; \$5.00 per 100

### SPECIAL COLLECTION OFFER

100 bulbs, 20 each of the above 5 Fine Tulips (value \$5.40), **\$4.75**  
 200 bulbs, 40 each of the above 5 Fine Tulips (value \$10.80), **9.00**



# Giant Darwin Tulips, May-flowering

For the herbaceous border, massed in clumps, along the edge of shrubbery, or as cut-flowers for vases, these are conceded to be the superior of all the Tulips

The most useful Tulips for garden decoration and cutting are found in the Darwin class. These Tulips are characterized by clear, fresh colors, usually free from mottlings, overlays, or feathered edges, and include all shades known in Tulips except brown and buff. The rare pure yellow is now available in recently introduced Darwin varieties. Their flowers are deep, bowl-shaped, borne on stiff stems 2 to 3 feet high, depending on variety and cultivation, and make the garden gay for several weeks in May, extending into June in the northerly districts.

We have included in our list a selected number of Ideal Tulips. These are identical with the Darwins and bloom at the same time. We have made extensive trials each year and have listed only the most outstanding varieties of the so-called Ideal Tulips. Extravagant claims have been made by some not-well-informed people, that these Tulips flower earlier and remain longer in bloom. We have not found

**ADORATION.** A very lovely color and quite distinct—a pale soft flesh-pink with lighter edge and a white base. Very large, well-formed flower carried on a fine strong stem. Height 28 inches.

\$1.30 for 10; \$12.00 per 100

**AFTERGLOW.** Deep, rosy orange, with salmon shading at edges of petals; inside deep orange with yellowish base. A sport of Baronne de la Tonnaye, which is of remarkable interest because it is the first instance of a Darwin sporting to the Breeder tones. A showy Tulip for outdoors. Height 26 inches.

60 cts. for 10; \$5.00 per 100



Darwin Tulips in bloom with Wisteria

this so. There are a very limited number of varieties which are distinct in color, of good texture, large in size and with strong stems. These we list for your consideration. Many of the finest exhibition varieties in our list can now be purchased at much lower prices than last year. We urge a trial of these new and rare kinds.

**CULTURE.**—Bulbs should be planted 5 to 6 inches deep and not less than 5 inches apart. Sand to the depth of ½ inch at the base of the bulbs will amply repay the trouble by the provision for drainage during wet weather. For forcing, bulbs should be planted as soon as received, and the flowers appear to better advantage if pots a trifle deeper than the ordinary bulb-pans are used. We recommend what are termed azalea-pots for this purpose. A temperature of 55 to 60 degrees is recommended, for if allowed to “come gently,” larger flowers and longer stems may be had.

**ANTON MAUVE.** A splendid exhibition variety on account of its wonderful stately habit. The flower is of unusually large size, and an even tone of deep bluish lilac. Excellent for the border or for pots. Height 32 inches.

75 cts. for 10; \$6.50 per 100

**APHRODITE.** Clear, silvery rose-pink with white base; a good-sized round flower of exquisite color on a very tall, stiff stem. Height 34 inches.

75 cts. for 10; \$6.50 per 100

**AVIATOR HAWKES.** Large, beautifully formed bloom of bright deep rose, carried on a tall, strong stem. A very attractive exhibition variety. Height 32 inches.

85 cts. for 10; \$7.50 per 100

**BARONNE DE LA TONNAYE.** A long and beautiful flower; clear carmine-rose at the mid-rib, base toning off to soft pink at the edges; white, tinged blue. An old favorite that continues to grow in popularity on account of its sturdy habit, large flower, pleasing color, and excellent blooming qualities. Height 26 inches.

60 cts. for 10; \$5.00 per 100

**BARTIGON.** Fiery crimson with white base. A variety largely grown by the commercial florist on account of its brilliant color. May be forced indoors to bloom in early February. Height 26 inches.

60 cts. for 10; \$5.00 per 100

**BENJAMIN FRANKLIN.** Lovely pure lavender Tulip of perfect form. Flowers of large size borne on fine strong stems. Height 29 inches.

70 cts. for 10; \$6.00 per 100

**BLEU AIMABLE.** Very lovely variety of pure heliotrope color, slightly darker on the inside. A good-sized flower borne on a fine strong stem, much superior to the variety Dream. Height 26 inches.

60 cts. for 10; \$5.00 per 100

**BLUE PERFECTION.** A very beautiful Tulip of bright violet, edged heliotrope, with a white base. Petals are pointed and slightly reflexed. Height 30 inches.

\$1.20 for 10; \$11.00 per 100

**CAROLINE TESTOUT.** This beautiful new Ideal Tulip resembles in color the rose of the same name—a rather even tone of soft rose, a trifle deeper in color than the lovely Ideal Tulip, La France. It is a fine, large, well-shaped flower of perfect form and exceptional lasting qualities. Height 28 inches.

\$5.50 for 10; \$50.00 per 100

**CITY OF HAARLEM.** Intense dark scarlet with darker bloom; large steel-blue base and white halo. Wonderful cup-shaped flower, with petals incurving slightly at the tips. One of the finest brilliant red Darwins. Quite the largest-flowered Tulip, and a winner in its class at many Tulip exhibitions. Height 27 inches.

80 cts. for 10; \$7.00 per 100

**CLARA BUTT.** Beautiful clear salmon-pink. No variety offered by us has the same distinctive and pleasing color. Height 22 inches.

60 cts. for 10; \$5.00 per 100

**DUCHESS OF HOHENBERG.** Pale slaty lilac-mauve, with stripe of rosy heliotrope; inside pale lilac, with white base. Enormous, long flower on a tall, stiff stem. Splendid exhibition variety. Height 29 inches.

\$1.00 for 10; \$9.50 per 100

**DUKE OF WELLINGTON.** A very fine pure white variety with a good strong stem. The flowers are of excellent substance. Height 26 inches.

\$1.00 for 10; \$9.00 per 100

**ECLIPSE.** A large, deep, rich, glowing blood-red flower of fine form. The best of its color. A popular variety at all Tulip exhibitions on account of its large flower, long stem, and wonderful substance. Height 30 inches.

\$1.40 for 10; \$12.00 per 100

**FARNCOMBE SANDERS.** A bright shade of scarlet, with a clear white base, contrasting well when the flower is fully open. Broad-petaled flower of large size. One of the best among the less-expensive reds for forcing or border planting. Height 25 inches.

60 cts. for 10; \$5.00 per 100



## GIANT DARWIN TULIPS, MAY-FLOWERING, continued

**FLAMINGO.** An even tone of pale shell-pink. A very exquisitely tinted Darwin, of refined coloring and form. While not a large flower, splendid for the border when planted in contrast with lavender varieties. Height 28 inches. 70 cts. for 10; \$6.00 per 100

**FAUST.** Rich, dark satiny purple-maroon, with a blue base. Very large flower of fine form. Quite the best in its color. Height 30 inches. 80 cts. for 10; \$7.00 per 100

**GIANT.** Flower of enormous size and wonderful substance. Deep reddish purple shaded violet. Quite the finest variety of this color, and one that can now be had at a much lower price. Height 30 inches. 80 cts. for 10; \$7.00 per 100

**GLACIER.** A new Ideal white Darwin Tulip that has the same fine characteristics as Mrs. Grullemans and White Giant as regards long season of bloom and substance, but differs in that the flower resembles the new hybrid Darwin-Cottage type, being decidedly oval and of giant size. Height 30 inches. \$4.00 for 10; \$35.00 per 100

**GOLDEN AGE.** Among the many new yellow Darwins of recent introduction, this giant variety is quite the finest. It is a bright golden orange—distinctly a new shade in yellow Tulips—and a fine, strong grower with exquisitely shaped flowers. Splendid for exhibition. Height 29 inches. \$5.00 for 10; \$45.00 per 100

**HELEN WILLS.** One of the finest of the rosy lilac shades with white base and bright blue halo. Large flower of perfect form, lasting a long time in bloom. Height 26 inches. 80 cts. for 10; \$7.00 per 100

**IMPERATOR.** A Tulip of the same deep crimson color as Bartigon, but taller and larger. The flower is of gigantic size and of splendid substance. Height 34 inches. \$4.00 for 10; \$35.00 per 100

**INSURPASSABLE.** A well-named variety, for it is truly outstanding. The huge lilac blooms are borne on 27-inch stems. It is far superior to the well-known variety, William Copland, and is highly recommended for exhibition and forcing. \$1.30 for 10; \$12.00 per 100

**JUBILEE.** Considered by Tulip fanciers as one of the finest of the blue-purple varieties. Huge flower of superb form and color. A first-prize variety at many Tulip exhibitions. Height 29 inches. 90 cts. for 10; \$8.00 per 100

**KING GEORGE V.** Perhaps best described as a deep cherry-rose with a blue base. A flower of very large size and splendid form. One of the most popular varieties for exhibition, and can now be had at an attractive price. Height 26 inches. 90 cts. for 10; \$8.00 per 100

**KING HAROLD.** Intense ruby-crimson, center rich black. Very tall and of fine form. A very rich deep color. Very distinct. Height 24 inches. 60 cts. for 10; \$5.00 per 100

**LA FIANCEE.** Deep rose, shading to old-rose and delicate pink at the edges, with blue base. Of large size, and very effective when planted with mauve and dark lavender sorts. A very handsome variety that can now be obtained at an attractive price. Height 30 inches. 70 cts. for 10; \$6.00 per 100

**LA FRANCE.** A new Ideal Darwin. Delicate pink, resembling the La France rose in color, with a pure white center—a new and lovely shade. Large, well-formed flower, borne on strong, stiff stem. Height 28 inches. 80 cts. for 10; \$7.00 per 100

**LA TOSCA.** Large, creamy yellow, egg-shaped flower with a darker yellow edge, turning sulphur-white when in full bloom; yellow base. A very beautiful variety. Height 27 inches. \$3.50 for 10; \$30.00 per 100

**LA TRISTESSE.** Deep slaty blue, with white base—a very distinct color. Splendid when planted with pale yellow and bronze varieties of the Cottage and Breeder Tulips. Height 26 inches. 60 cts. for 10; \$5.00 per 100

**LA TULIPE NOIRE (The Black Tulip).** The nearest in color to the so-called "Black Tulip"—deep maroon-black which has a velvety sheen in the sunlight. Height 25 inches. 70 cts. for 10; \$6.00 per 100

**LADY HILLINGDON.** This variety has been named after the rose it resembles in color. When flowering outside it is orange shaded buff, a color not found among the Darwins; grown indoors, it is a bright orange. Height 27 inches. \$4.00 for 10; \$35.00 per 100

**LILAC WONDER.** Another Ideal Darwin Tulip of distinct merit on account of its lovely color—bright porcelain-blue with a white base. The flowers are large, of splendid substance, and possess excellent keeping qualities. 95 cts. for 10; \$8.50 per 100

**LOUISE DE LA VALLIERE.** Brilliant cherry-rose with pale blue base starred white. A very clear and beautiful color. This and King George V are two Tulips that are always admired in our Trial-Gardens on account of their lively color and large size. Splendid for exhibition. Height 24 inches. 80 cts. for 10; \$7.00 per 100

**MAHOGANY.** A very large flower of true Darwin form, of a rich deep shade of mahogany, with a darker base. Excellent for exhibition. \$4.00 for 10; \$35.00 per 100



Big bowl-like flowers of the Giant Darwins

**MARGAUX.** Gigantic flower of deep wine-red, broadly edged with a lighter shading of wine-red. A Tulip of great size and beauty with a fine strong stem. Height 30 inches. \$1.10 for 10; \$10.00 per 100

**MELICETTE.** Beautiful pure lavender, shading to paler lavender at the edges, with a beautiful blue base. A very lovely variety. Height 26 inches. 80 cts. for 10; \$7.00 per 100

**MERMAID.** A new variety that blooms early, with huge, long-lasting flowers of good substance. Delicate flesh-pink, lighter edge, with creamy white base. Height 30 inches. 80 cts. for 10; \$7.00 per 100

**MR. VAN ZYL.** Glorious dark rosy pink with a border somewhat paler. A new Darwin Tulip very much admired in our Trials on account of its striking color, large size, and excellent texture. Height 30 inches. \$2.20 for 10; \$20.00 per 100

**MRS. GRULLEMANS.** A lovely pure white Ideal Darwin Tulip, with huge flowers of great substance, and a pure white center; yellow anthers. An outstanding Tulip and one of the finest of new introductions. Height 30 inches. \$1.70 for 10; \$15.00 per 100

**MRS. HAROLD I. PRATT.** Magnificent globular flower of soft rose and amber, with occasional tones of purple-brown. The petals are broad and rounded, the three outer ones slightly reflexed. Fine strong-growing variety. Height 30 inches. \$1.10 for 10; \$10.00 per 100

**MRS. MANDEL.** This beautiful Ideal Darwin Tulip is in color, very much on the order of the Darwin Tulip, Dream, but superior in every way. Very beautiful in the garden and may be forced in bloom in late January. Violet-blue flushed lilac. Height 29 inches. 70 cts. for 10; \$6.00 per 100

**MRS. WILLIAM R. CONKLIN.** A gem among the new white Ideal Darwin Tulips. Like Glacier, it has beautiful, fine, oval-shaped petals of glistening whiteness, gigantic size, and wonderful substance. It maintains its color through its entire period of bloom. Flowers with the earliest white Ideal Tulips and remains in fine condition with the latest. Height 30 inches. \$4.00 for 10; \$38.00 per 100

**NIPHETOS.** A glorious lemon-yellow flower with light tan anthers. The petals are of remarkable texture and last a long time in perfect condition in the garden. Height 29 inches. \$5.00 for 10; \$45.00 per 100

**PRESIDENT HARDING.** A variety which has proved very fine for exhibition work. The large, deep purple flower, shaded violet, is borne on a tall, strong stem. Can now be obtained at an attractive price. Height 32 inches. 75 cts. for 10; \$6.50 per 100



## GIANT DARWIN TULIPS, MAY-FLOWERING, continued

**PRIDE OF HAARLEM.** Magnificently formed flower of immense size, brilliant, deep rose, shaded scarlet, with light blue base. This variety is perhaps the most widely known for its stately habit and glorious color. Height 36 inches. 60 cts. for 10; \$5.00 per 100

**PRIDE OF ZWANENBURG.** An outstanding new Tulip of fine exhibition form. Flowers of large size and excellent substance. Best described as an even tone of pure salmon-pink, slightly lighter at the edges. Height 30 inches. \$7.50 for 10; \$70.00 per 100

**PRINCESS ELIZABETH (Julie Vinot).** Beautiful clear deep pink, changing with age to rose-pink; white base. Large, like a rose when first open. Height 26 inches. 60 cts. for 10; \$5.00 per 100

**PRINCESS MARY.** Bright carmine-rose with margin of rose-pink; inside clear carmine-rose with blue base and white halo; huge flower on a splendid stem. A magnificent variety in every way and much admired at Tulip exhibitions. Can now be obtained at lower prices. Height 28 inches. \$1.50 for 10; \$13.00 per 100

**QUEEN OF THE NIGHT.** One of the darkest Tulips ever introduced. Superior to the Darwin Tulips Mystery and La Tulipe Noire. Large, well-formed flowers of excellent substance on fine strong stems. \$4.00 for 10; \$35.00 per 100

**REV. H. EWBANK.** An exquisite shade of soft lavender-violet, slightly shaded silver-gray. A variety of great merit on account of its lovely color. Height 23 inches. 60 cts. for 10; \$5.00 per 100

**RONALD GUNN.** Bright shade of violet, edged pale lavender, with a conspicuous white base. A flower of splendid shape and even more exquisite when grown in pots. Height 26 inches. 75 cts. for 10; \$6.50 per 100

**SCOTCH LASSIE.** Pure deep lavender, with darker shade inside and a dark blue base. Far superior to Melicette, the flowers being larger and of greater substance. Remains in flower for a long period of time. Height 29 inches. \$1.10 for 10; \$10.00 per 100

**SNOWSTORM.** A fine snow-white Darwin Tulip, like White Giant, but with black anthers. Large, well-formed flowers of excellent substance. Height 28 inches. 80 cts. for 10; \$7.00 per 100

**THE BISHOP.** One of the most outstanding Tulips at most Tulip exhibitions, and conceded the finest in its class whether grown in the border or in pots indoors. Best described as the purest heliotrope shade in the Darwins. A large, bowl-like flower of very artistic coloring. Height 30 inches. \$1.00 for 10; \$9.00 per 100

**THE PEACH.** This Tulip can perhaps best be described as a beautiful tint of peach-pink. Large, well-formed flower, on a fine strong stem. Excellent for exhibition. \$3.50 for 10; \$30.00 per 100

**TILLY LUS.** A fine shade of rosy lavender. Flowers of unusual size and splendid substance. A distinct variety very much admired at our Testing Gardens. Height 28 inches. 80 cts. for 10; \$7.00 per 100

**VALENTIN.** A lovely shade of deep mauve-violet, inside heliotrope, with blue base. A long, large flower on a tall stem. Splendid Tulip for the border. Height 30 inches. 70 cts. for 10; \$6.00 per 100

**VENUS.** A splendid exhibition variety and the finest of its color. Pure, even tone of silvery rose, white base, marked with a pale blue ring. A large, well-formed flower of very pleasing color. Height 28 inches. 70 cts. for 10; \$6.00 per 100

**WHITE GIANT.** We consider this, Mrs. Grullemans, and Zwanenburg quite the finest of the many new introductions in white Ideal Darwin Tulips. The large, well-formed flower is of splendid substance, borne on a strong, stiff stem. Height 30 inches. \$1.40 for 10; \$12.00 per 100

**WILLIAM COPLAND.** Uniform lilac-rose. May be forced as early and as easily as the Early Tulips. The color, when grown indoors, becomes a most beautiful lavender. Height 24 inches. 60 cts. for 10; \$5.00 per 100

**WILLIAM PITT.** Very dark crimson, with purplish bloom on the outer petals. Large flower of distinct color and one that can be forced in bloom early. Height 24 inches. 60 cts. for 10; \$5.00 per 100

**YELLOW GIANT.** A rich deep golden yellow, fine, large, globular flower, carried on long, strong stem. Splendid for exhibition. Can now be obtained at a much lower price. Height 28 inches. 70 cts. for 10; \$6.00 per 100

**ZWANENBURG.** This variety, which first appeared in a specialist's culture, was noted by us in 1913 when there existed six bulbs. It is the first example of a pure white Darwin. Height 28 inches. 90 cts. for 10; \$8.00 per 100

**S. & W. CO.'S DARWINS, MIXED.** For those who prefer planting Darwin Tulips in mixture for the cutting garden we offer a well-balanced mixture carefully prepared to include the distinct colors. 50 cts. for 10; \$4.50 per 100; \$42.00 per 1000

## DARWIN AND BREEDER COLLECTION

We offer 4 distinct varieties of Breeder and Darwin Tulips suitable for border planting or for the cutting garden

**Jaune d'Œuf Rev. H. Ewbank Pride of Haarlem Clara Butt**

**SPECIAL COLLECTION OFFER**  
100 Bulbs, 25 of each (value \$5.25)

\$4.00



Jaune d'Œuf

Rev. H. Ewbank

Pride of Haarlem

Clara Butt

# Dutch Breeder Tulips

May-Flowering

LOUIS XIV

FAIRY

BACCHUS

Breeder Tulips are very similar in habit to the Darwins, and flower at the same time. Their chief characteristic is their immense blooms, borne on strong, stiff stems, many of them longer than the most gigantic Darwins. The revival of the taste for art colors has made these Tulips, at one time very popular in England, strong favorites with American enthusiasts, who find in their bronze, buff, and brown shades excellent material for contrasting with the light and bright colors of the Darwins.

*They require the same cultural treatment as the Darwins*

**ABD-EL-KADIR.** Dull bronze-yellow, shading to light bronze at edge of petals; inside bronze-brown, with olive-green base; good-sized flower. Height 26 inches. 65 cts. for 10; \$5.50 per 100

**ADMIRAL TROMP.** One of the newer Breeder Tulips which will become more popular when better known. The general tone of the flower is a bright orange-red shaded salmon. Petals are of good substance and the blooms are large. Height 30 inches. \$2.10 for 10; \$20.00 per 100

**AUGUSTUS.** This new Giant Breeder Tulip is one of the finest in the new deep lilac-lavender shades. The flowers are of excellent substance, large and well formed. Height 32 inches. \$1.10 for 10; \$10.00 per 100

**BACCHUS.** Dark violet-blue, the outside of the petals having a darker bloom; base starred white. The nearest approach to dark blue in late Tulips. Fine for contrasting with bronze varieties. Height 28 inches. 70 cts. for 10; \$6.00 per 100

**BRONZE QUEEN.** Large, soft golden bronze flower of sturdy habit. A very exquisite color when forced and splendid for the border. Height 28 inches. 65 cts. for 10; \$5.50 per 100

DOM  
PEDRO

## SPECIAL COLLECTION OFFER

100 bulbs, 25 each of the varieties illustrated on this page (value \$6.00) . . . **\$5.00**





## DUTCH BREEDER TULIPS, MAY-FLOWERING, continued

**CARDINAL MANNING.** A splendid shade of rosy violet, with a slight edge of bronze. Large flower of fine form. Height 28 inches. 70 cts. for 10; \$6.00 per 100

**COPERNICUS.** Dark coppery bronze, flushed old-rose; interior warm brown with yellow base. An attractive, large flower, borne on a strong stem. Height 28 inches. 75 cts. for 10; \$6.50 per 100

**CHERBOURG.** This is, undoubtedly, one of the finest Breeder Tulips ever introduced. We are able to offer only a limited quantity of it. Its color is best described as a deep tone of golden yellow, with a suffusion of terra-cotta, the deeper tone of yellow growing stronger toward the edges of the petals. The flower is much admired on account of its gigantic size and beautiful color. Can now be obtained at a much lower price. Height 32 in. \$1.40 for 10; \$12.00 per 100

**DILLENBERG.** A new variety much on the order of the Cottage Tulip Dido, but of a brighter and deeper tone best described as a glorious salmon-orange. The blooms are perfect. Height 28 inches. 80 cts. for 10; \$7.00 per 100

**DOM PEDRO.** Coffee-brown, shaded maroon, inside rich mahogany; large flower; very fragrant. Height 21 inches. 70 cts. for 10; \$6.00 per 100

**FAIRY.** Reddish mahogany, with bronze shading; an extra-large flower of artistic character. For borders or late forcing. Height 24 in. 70 cts. for 10; \$6.00 per 100

**GARIBALDI.** One of the finest Breeders as yet introduced. Pale lilac-bronze, with a broad primrose-yellow margin. A long and graceful flower. We are pleased to state that we can offer this variety at a much lower price this year. Height 31 inches. 80 cts. for 10; \$7.00 per 100

**GEORGE GRAPPE.** A welcome addition to the so-called "Giant New Breeder Tulips." When well grown the stems attain the height of 48 inches and the flowers are of large size and a uniform shade of soft mauve. \$5.00 for 10; \$45.00 per 100

**GODET PARFAIT.** Dark blue-purple, with white base and blue halo; very large flower of striking color. Height 30 inches. 70 cts. for 10; \$6.00 per 100

**GOLDEN WEST.** A distinct color in the new Giant Breeder Tulips. The general effect of the flower is a golden buff, an excellent color for contrasting with the deeper tones of the Breeders. Height 30 inches. \$1.00 for 10; \$9.00 per 100

**GOLDFINCH.** Elegantly formed, large, pointed flower. Rich golden chestnut, inside deep mahogany-brown, yellow base. Height 30 inches. 70 cts. for 10; \$6.00 per 100

**HUCHTENBURG.** This is a giant among Tulips. The flowers are large, of good substance, bluish lilac in color, suffused chestnut red, edged with golden brown. Height 39 inches. \$1.60 for 10; \$14.00 per 100

**INDIAN CHIEF.** Reddish mahogany flushed purple, edged warm brown with age; yellow base. A huge flower of wonderful substance and most artistic shape, carried on a very tall stem. A splendid exhibition variety that can now be had at a much lower price. One of the finest in our Catalogue. Height 33 inches. \$1.10 for 10; \$10.00 per 100

**JAUNE D'ŒUF.** Ruddy apricot, inside soft yellow, with black base and anthers; very striking variety. Height 21 inches. 70 cts. for 10; \$6.00 per 100

**JESSEY.** This magnificent Tulip is much on the order of Louis XIV but larger and livelier in color. The general effect is a clear coffee-brown, bronzy red. The gigantic flower is borne on a fine, strong stem. Splendid for exhibition. Height 36 inches. \$2.10 for 10; \$20.00 per 100

**LOUIS XIV.** An even tone of dark purple, with a broad margin of golden bronze; green-black base starred yellow; very large flower of wonderful substance. A very fine variety. Height 30 in. 70 cts. for 10; \$6.00 per 100

**LUCIFER.** Clear orange, with a rosy flush and olive base, with yellow star; very large flower on a tall stem. A gorgeous color which glows like a fire. Height 24 inches. 90 cts. for 10; \$8.00 per 100

**MARECHAL VICTOR.** Pale lavender-violet, with broad edge of buff shaded bronze; inside violet, faintly flushed mahogany with beautiful green base—a color combination which we have seen in no other Tulip. A large flower of open, graceful form. Tall and holds the bloom well poised. Height 28 inches. \$1.00 for 10; \$9.00 per 100

**MINERVA.** Another of the new Giant Breeder Tulips. Bright violet, shaded blue, broadly edged bronze and gray—a new color. Splendid for exhibition. Height 36 inches. \$2.10 for 10; \$20.00 per 100

**MRS. BEECHER STOWE.** Large flower of fine form on strong stem. One of the finest deep purple varieties with a velvety bloom on the outer petals. Effective on account of its large size and strong color. Height 30 inches. 85 cts. for 10; \$7.50 per 100

**MRS. J. RAMSAY HUNT.** Rich deep shade of purple. The flower is of large size, wonderful texture, and is borne on strong, sturdy stems. Height 32 inches. \$2.25 for 10; \$20.00 per 100

**NEWTON.** Dark purple, with plum bloom on outer petals. A flower of the same tone as Darwin Jubilee, but not so large. One of the tallest Tulips. Height 35 inches. \$2.60 for 10; \$24.00 per 100

**PINK PEARL.** A Breeder, quite the finest of its color. The outside of the flower is a lilac-pink, inside rose; beautiful white base. A large, egg-shaped flower. Height 26 inches. 80 cts. for 10; \$7.00 per 100

**PRINCE ALBERT.** Golden brown, with purple flush through center of petals, which disappears as the flower ages. Height 32 inches. 70 cts. for 10; \$6.00 per 100

**PRINCE OF ORANGE.** Dark terra-cotta-brown, shaded yellow, with a yellow base starred black. Splendid for the border and good for forcing. Height 24 inches. 70 cts. for 10; \$6.00 per 100

**RAYON D'OR.** Large, well-formed flower of great substance, carried on a strong stem. The color is a bright golden bronze, edged bronzy yellow with olive-green base. A splendid exhibition variety. Height 30 inches. 90 cts. for 10; \$8.00 per 100

**ROI SOLEIL.** This fine Breeder Tulip is a combination of shades—rich dark violet, flamed with bronze; large flower borne on a strong stem. Height 28 inches. 80 cts. for 10; \$7.00 per 100

**TANTALUS.** A new Breeder Tulip of real merit. Cup-shaped blooms of light cadmium-yellow, shaded dull violet. Height 30 inches. \$2.75 for 10; \$25.00 per 100

**THOMAS STEVENSON.** Another of the New Giant Breeder Tulips that is much admired in our Trial Gardens. A gigantic flower of an even tone of light lavender. Height 32 inches. \$1.40 for 10; \$13.00 per 100

**VELVET KING.** Deep, glossy purple-maroon, with a white base; flower of gigantic size. A magnificent Tulip for the border or shrubbery and forms an effective contrast when planted with the light-colored Tulips. Height 28 inches. 80 cts. for 10; \$7.00 per 100

**S. & W. CO.'S BREEDER, MIXED.** For those who wish to plant for the cutting garden we offer a well-balanced mixture. 55c. for 10; \$5.00 per 100; \$45.00 per 1000



# Cottage and Hybrid Tulips, May-flowering

The Cottage Tulips, like the Darwins, flower late. Many of the varieties are used extensively for late bedding and are magnificent for this purpose. The pale primrose, deep yellow, and splendid white sorts are often planted with the Darwins for effects of contrast. The following list, we feel sure, contains most of the best varieties. Certain sorts, like some of the Darwins, will flower a few days earlier than

others, but on the whole the earliest is just at its best when the latest-flowering variety is just beginning to show bloom. We have included many of the finest of the new late-flowering Hybrid Tulips. They are the results of crossing the Darwin with Cottage Tulips, and bloom at the same time as the other May-flowering varieties.

**ADVANCE.** A much-admired Tulip in our Trial Gardens. It is the result of a cross between Gesneriana spathulata and the Botanical Tulip Greigi. One of the largest flowers seen in Tulips, reminding one when fully opened of an Oriental poppy. The color is difficult to describe—a fiery red with a blue base. One of the earliest of the May-flowering Tulips. Height 32 inches. \$1.70 for 10; \$16.00 per 100

**ALASKA.** One of the finest of the new Hybrid Tulips. The flowers are long, the outer petals slightly reflexed and of an even tone of pure yellow. Height 28 inches. 70 cts. for 10; \$6.00 per 100

**AMBROSIA.** This beautiful new variety of Hybrid Tulip contains a combination of shades—bronze with rosy lilac glow; inside of the large, well-shaped flower is a salmon-orange tone. An interesting new Cottage Tulip. Height 28 inches. 70 cts. for 10; \$6.00 per 100

**ARETHUSA.** The large, urn-shaped flower is of true Cottage form, of a light shade of chrome-yellow. A new variety greatly admired on account of its size, lovely form, and fine, erect stem. Height 25 inches. 80 cts. for 10; \$7.00 per 100

**AVIS KENNICOTT.** A rich, deep shade of yellow, with a striking black base and anthers. One of the best of the newer varieties. Height 25 inches. 70 cts. for 10; \$6.00 per 100

**BARBARA PRATT.** Rich, light cochineal-carmine, edges lilac-rose, with narrow green edge; anthers yellow. A very beautiful Tulip with slightly reflexed petals. Highly recommended for exhibition. In a test of over one hundred varieties of New and Rare Tulips in the writer's garden, this variety was very frequently commented on. We consider it one of the finest Tulips of recent introduction. Height 36 inches. \$1.00 for 10; \$9.00 per 100

**BETSY ROSS.** A beautiful new shade in Tulips. Best described as a rich deep orange. The flower is of large size, borne on fine strong stems. Height 26 inches. 90 cts. for 10; \$8.00 per 100

**BUFF BEAUTY.** A Tulip of unusual coloring, the result of a cross between a Darwin and a Breeder. The cup is similar in form to the Darwin Tulip, with strong, erect stem. Its color, perhaps, is best described as a glowing blend of coral-rose and dark amber, with a canary base and buff anthers. Height 26 inches. 80 cts. for 10; \$7.00 per 100

**CARRARA.** This Tulip, when first exhibited in 1921, was considered the finest new white variety. Blooms broadly cup-shaped, with rounded petals that all come to the same level when the flower is half open. Height 26 inches. 90 cts. for 10; \$8.00 per 100

**DIDO.** A large, well-formed flower of rich orange-rose tone, with margin of bright orange-yellow, inside bright orange with yellow base. We believe this variety will be very popular this year and its greatly reduced price will find it in greater demand. Height 30 inches. 60 cts. for 10; \$5.00 per 100

**DOSIA.** This new and interesting Grulemani Tulip is perhaps best described as a bright red with broad yellow edges. The flowers are gigantic, of wonderful substance, and very striking on account of their new and novel coloring. Height 29 inches. \$1.70 for 10; \$16.00 per 100

**FASCINATING.** While classified as Lily-flowering, this new and distinct Tulip is one of the finest, if not the finest, of recent introduction. A majestic Tulip in every way. Exterior an even tone of sulphur-yellow; interior dark lemon-yellow. Large, reflexing petals of perfect form, borne on tall, straight stems. A gem for a partially shady location in the border. Height 28 inches. \$3.50 for 10; \$30.00 per 100

**GESNERIANA LUTEA.** A bedder of unsurpassed qualities, with perfect-shaped flowers of purest golden yellow, on strong stems holding the flowers perfectly erect. Height 24 in. 60 cts. for 10; \$5.00 per 100

**GOLDEN STATUE.** A new Tulip of great size, pale yellow in color, and oval in shape. One of the finest Tulips for outdoor planting; stems tall and strong. Height 26 inches. \$3.00 for 10; \$25.00 per 100

**GRENADIER.** A Tulip of great beauty and of an unusual and striking color—brilliant orange-red throughout. The flowers are large, very sweetly scented, and borne on sturdy stems. Excellent for both beds and borders. Height 24 inches. 60 cts. for 10; \$5.00 per 100

**GRISILDE.** This and Inga Hume are unique among Tulips. They are the result of crossing Darwin Tulips with a Tulip species. The flowers are of remarkable substance and last for two weeks after being cut. Grisilde is white, with a faint red spray on the outer petals and inside creamy white. Height 26 in. \$1.00 for 10; \$9.00 per 100

**INGLESCOMBE PINK (Salmon Queen).** Beautiful soft rosy pink, slightly flushed salmon; large, globular flower of excellent form. Adapted for borders or late forcing. Height 22 inches. 60 cts. for 10; \$5.00 per 100

**INGLESCOMBE YELLOW.** A beautiful variety. Size, form and height greatly resemble the Darwins, so much so that it is frequently called the "Yellow Darwin," a fitting title. Height 22 inches. 60 cts. for 10; \$5.00 per 100

**JANE ALDRED.** Flowers of large size, excellent form, and a uniform even tone of creamy yellow. A strong, even grower and one of the best, if not the best, of its color. Height 28 inches. \$1.75 for 10; \$15.00 per 100

**JEANNE DESOR.** A beautiful new Hybrid Tulip, the result of a cross between a Darwin and a Cottage Tulip. It is a rather striking color-combination—a deep orange-yellow with a broad border of scarlet toward the edge of the petals. The long, well-formed flower is of splendid substance, and borne on strong, stiff stem. Height 28 inches. 90 cts. for 10; \$8.00 per 100

**JOHN RUSKIN.** Salmon-rose, edged soft lemon-yellow, inside deep rosy lilac—beautiful combination of colors; large flower of fine shape on a graceful stem. Height 16 inches. 60 cts. for 10; \$5.00 per 100

**LEMON QUEEN.** An excellent Tulip of fine form and substance. Quite the best of the less-expensive lemon-yellow varieties. Height 28 inches. 80 cts. for 10; \$7.00 per 100

**LOHENGRIN.** Few Tulips have a greater brilliance of color than Lohengrin. It is a brilliant cochineal-red throughout the life of the flower; broad, beautiful white base. Fine, large, well-formed flower on a tall, straight stem. Height 30 inches. 90 cts. for 10; \$8.00 per 100

**MAGNOLIA.** One of the most unusually colored Tulips in our list. Creamy white, heavily marked, suffused, and shaded red. Base dark blue, bordered white. Height 26 inches. \$1.00 for 10; \$9.00 per 100

**MARION VOORHEES.** One of the new clear buttercup-yellows which will become popular when stocks become more plentiful. Very graceful flower, of good size, on a fine strong stem. Height 28 inches. 80 cts. for 10; \$7.00 per 100

**MARJORIE BOWEN.** A very unusual shade—a combination of buff and salmon which passes to deep rose-pink with salmon shading. The large, well-formed flower is borne on a fine strong stem. Height 24 inches. \$1.30 for 10; \$12.00 per 100

**MARSHALL HAIG.** Among the new Tulips this ranks supreme as being one of the finest brilliant self-red colors. A flower of magnificent size and texture and much admired on account of its brilliant tone. Height 30 inches. \$1.50 for 10; \$14.00 per 100

**MONGOLIA.** There have been a great many Seedling Tulips introduced recently, both in light and dark yellow shades, but we think that this is one of the finest and largest in the deep yellow class. Flowers egg-shaped, carried on tall, strong stem. Height 32 inches. \$7.00 for 10; \$65.00 per 100

**MOONLIGHT.** Bright canary-yellow, splendid, large flower, oval in shape, outer petals slightly reflexed at tips. An excellent yellow for combination with the Darwin varieties and has long been a favorite. Height 22 inches. 60 cts. for 10; \$5.00 per 100

**MRS. F. E. DIXON.** We consider this one of the finest pure sulphur-yellow varieties. The flowers are very large and the petals of wax-like texture and of unusual substance. They remain in bloom a long time and, like varieties of this color, gradually fade to almost white as the flower ages. Height 28 inches. \$2.20 for 10; \$20.00 per 100

**MR. WENTHOLT.** One of the finest of the deep rich yellow Cottage Tulips. A fine strong grower, large in size, and of splendid texture. Height 28 inches. \$2.25 for 10; \$20.00 per 100

**MRS. MOON (Fulgens lutea maxima).** Deep golden yellow; large flowers of good substance, slightly reflexing, somewhat approaching the "lily-flowered" shape. A famous Parisian boulevard Tulip, and one of the best deep yellow varieties. Height 24 inches. 60 cts. for 10; \$5.00 per 100

SEE PAGE 18 FOR OTHER COTTAGE AND HYBRID TULIPS





# FIVE FINE EXHIBITION Tulips

We have featured on this page five fine Exhibition Tulips. All these varieties are now obtainable at more attractive prices and are a choice collection for any fine garden display

# SPECIAL Darwin Tulip Border Collection

In Tones of Lavender, Lilac, White, Pale Pink, and Rose



**YELLOW GIANT**  
70 cts. for 10;  
\$6.00 per 100  
See page 12



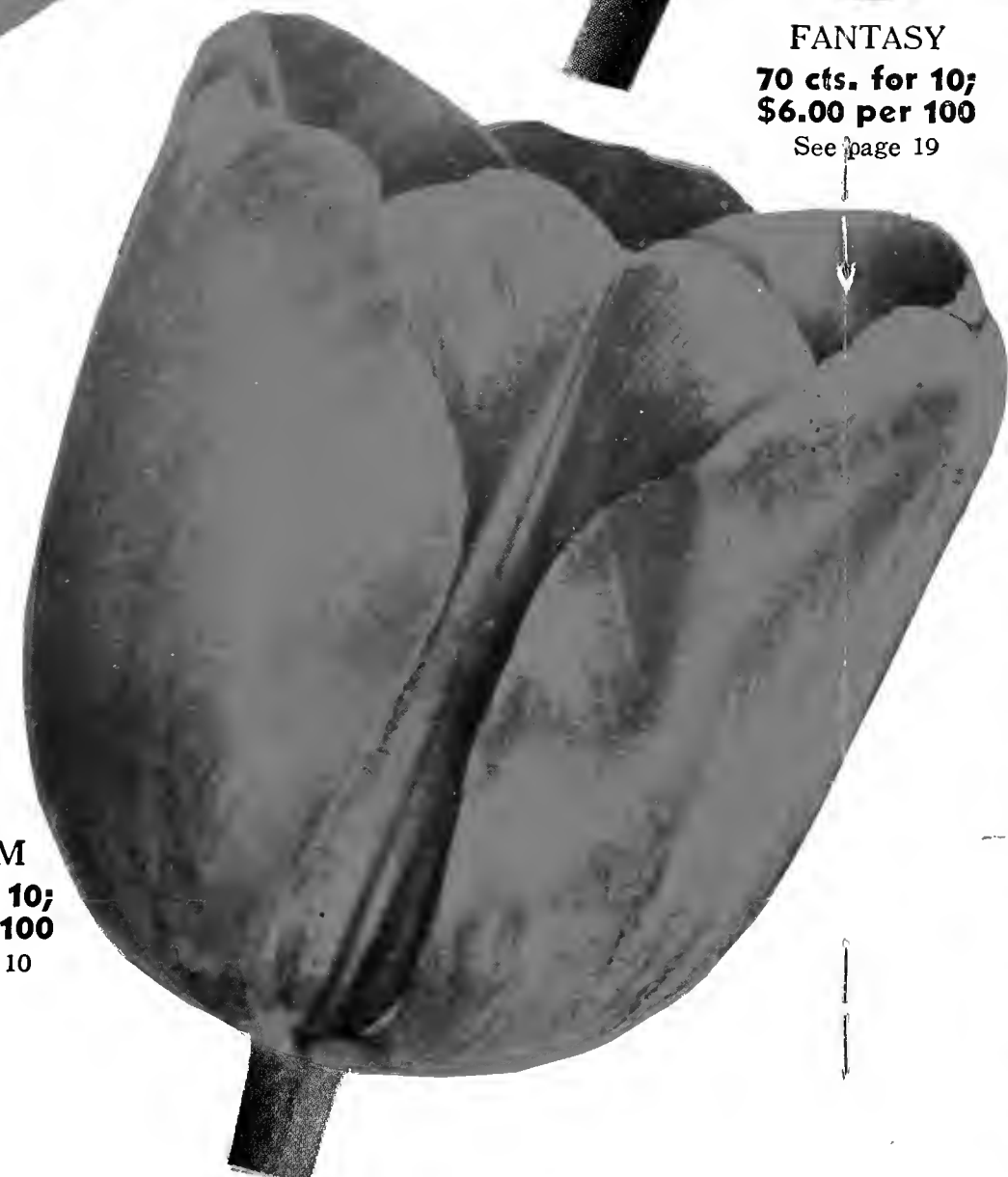
**DIDO**  
60 cts. for 10;  
\$5.00 per 100  
See page 15



**FANTASY**  
70 cts. for 10;  
\$6.00 per 100  
See page 19



**THE BISHOP**  
\$1.00 for 10;  
\$9.00 per 100  
See page 12



**CITY OF HAARLEM**  
80 cts. for 10;  
\$7.00 per 100  
See page 10

THE TULIP fancier will find this collection of Exhibition Darwin Tulips suitable for planting in the order suggested, if he or she is desirous of obtaining a lovely color scheme. The garden illustrated below shows the possibility of accomplishing this by planting in blocks of 10 or 20 bulbs, or larger quantities if the area permits.

It is suggested that the planting begin (left to right, in color illustration below) with the

*Pure Lavender*

**BENJAMIN FRANKLIN**

See page 10

*Pure Lilac*

**TILLY LUS**

See page 12

*Pure White*

**DUKE OF WELLINGTON**

See page 10

*Pale Pink*

**LA FRANCE**

See page 11

*Rose, VENUS* See page 12

## SPECIAL COLLECTION OFFER

50 bulbs, 10 each of 5 varieties  
(Value \$4.00)

**\$3.50**

100 bulbs, 20 each of 5 varieties  
(Value \$8.00)

**\$6.50**

## SPECIAL COLLECTION OFFER:

50 bulbs, 10 each of 5 varieties  
(Value \$3.80)

**\$3.25**

100 bulbs, 20 each of 5 varieties  
(Value \$7.60)

**\$6.00**





## COTTAGE AND HYBRID TULIPS, MAY-FLOWERING, continued from page 15

**NECTARINE.** A very lovely variety, particularly when planted in a shady location. Beautiful shade of primrose-yellow, flushed apricot near the edges of the petals. Height 26 inches. \$1.30 for 10; \$12.00 per 100

**ORANGE KING.** Beautiful deep orange, shaded rose, inside deep orange-scarlet; yellow center. Very sweetly scented. Height 23 inches. 60 cts. for 10; \$5.00 per 100

**PICOTEE (Maiden's Blush).** White, margined deep rose, the color suffusing the whole flower as it ages; medium-sized flower, reflexing. Grand for the border. A large bed planted to this variety is a sight that will not easily be forgotten. Height 20 inches. 60 cts. for 10; \$5.00 per 100

**QUEEN OF SPAIN.** The Tulip fancier in search of new and lovely shades of Tulips will find Queen of Spain a gem in every way. The general color of the flower is a delightful cream with a subtle flushing of peach-pink. Very lovely and distinct. Fine, large, cup-shaped flower. Height 28 inches. \$3.00 for 10; \$28.00 per 100

**REFULGENCE.** Outstanding in color, huge in size, and in all respects most highly recommended. This is one of the largest flowering Tulips among the new orange-scarlet hybrid varieties. Height 25 inches. \$1.90 for 10; \$18.00 per 100

**ROSABELLA.** This beautiful variety—one of the finest introductions in Cottage Tulips of recent years—is, perhaps, best described as a beautiful shade of salmon-rose. One of the finest of the new Hybrid Tulips which can now be purchased at a much lower price. When planted in the hardy border, especially when the lovely early-blooming *Anchusa myosotidiflora* is used as a ground-cover, the lovely color of this variety creates a very charming effect. Height 24 inches. 80 cts. for 10; \$7.00 per 100

**SIRENE.** This beautiful lily-flowering Tulip is a lovely variety not only on account of its color, but because of the exquisite urn-like shape of the flower. A rich cerise-pink, white base. Height 26 inches. 70 cts. for 10; \$6.00 per 100

**VESTA.** This new hybrid is one of the finest white varieties in this class. It opens creamy white, but quickly changes to pure white. 70 cts. for 10; \$6.00 per 100

**WHITE DUCHESS.** Another gem among the hybrids. Like Alaska, Captain Fryatt, Fascinating, and Sirene, this Tulip is popularly termed Lily-flowering. This class of Tulip was the result of crossing the dainty pointed-petaled Tulip *Retroflexa* with a Darwin Tulip. In White Duchess we have a pure snow-white variety of unusual size, borne on a fine strong stem. Height 28 inches. \$2.00 for 10; \$18.00 per 100

**SUPERB MIXTURE.** A select assortment, covering almost every conceivable color and shade. Those who have not grown these Tulips, and desire a mixture for trial purposes, can depend on getting every color that obtains in this beautiful class of Tulips.

50 cts. for 10; \$4.50 per 100;  
\$42.00 per 1000

## Single Early Tulips FOR APRIL BLOOMING OUTDOORS, POTS, AND FORCING

Few, if any, of the spring-blooming flowers rival the Single Early Tulips for brilliancy of bloom or ease of culture. They are excellent subjects for formal beds on the lawn or for garden borders. While they do not possess the same size of bloom and length of stem as the May-flowering Darwin, Breeder and Cottage varieties, they are frequently used where early blooms are desired. Many of the varieties may be forced in bloom in January, while all of them may be easily had in flower in pots late in February or early March.

NOTE.—The letters A, B, and C following the varieties indicate their relative earliness of bloom, but, with few exceptions, most of the varieties bloom outdoors about the same time when planted in masses. The figures indicate the height in inches.

The following list contains the best novelties extant, as well as a complete list of the best standard varieties. We have discarded quite a number of varieties which no longer grow well.

**BRILLIANT STAR.** A 12. Bright vermilion-scarlet, same color as Vermilion Brilliant, but larger and of great substance. Splendid early forcer, flowering easily for Christmas. 70 cts. for 10; \$6.00 per 100

**COULEUR CARDINAL.** C 12. Bright crimson-scarlet, with a deeper tone of bloom on the outer petals. A bed planted wholly to this variety is a grand sight. Fine for midseason forcing. 70 cts. for 10; \$6.00 per 100

**DE WET.** B 16. Golden yellow, flushed deep orange; large, sweet-scented flower of erect habit. Quite different in color from any other variety. A glorious flame-color Tulip for any position in the garden and an equally beautiful variety when grown indoors. 70 cts. for 10; \$6.00 per 100

**DIADEM.** A 16. A very beautiful new variety when forced early, being an even tone of pearly pink. Excellent for pots or cutting. 70 cts. for 10; \$6.00 per 100

**FLAMINGO.** B 12. Carmine-rose, shaded lighter. The petals are striped white and very crinkled, giving the flower a decidedly artistic appearance. A very popular variety among florists for forcing on account of its odd color and habit. 60 cts. for 10; \$5.00 per 100

**FORTUNA.** A 14. Perhaps best described as a satiny lilac-rose—a very beautiful color without the slightest trace of magenta. Splendid for early forcing. 70 cts. for 10; \$6.00 per 100

**FRED MOORE.** B 12. An improved form of Thomas Moore. Deep, ruddy apricot, shading at the edges of the petals to dull orange-yellow; center marked olive-green; medium-sized flower; sweet-scented. A lovely color when forced. 60 cts. for 10; \$5.00 per 100

**IBIS.** B 14. A darker form of Flamingo—brilliant dark pink when grown indoors. Grand exhibition variety. 60 cts. for 10; \$5.00 per 100

**KEIZERKROON.** A 15. Bright crimson-scarlet, edged clear, rich yellow; excellent, large flower on long stem. Fine bedder; splendid for forcing. 75 cts. for 10; \$6.50 per 100

**KING OF THE YELLOWS.** A 14. Deep golden yellow, egg-shaped, very substantial flowers carried on tall stems, which makes them excellent for cutting. One of the earliest yellows which should be much more used for early forcing. 60 cts. for 10; \$5.00 per 100

**LADY BOREEL (Joost Van Vondel White).** B 13. Large, long, snowy white flower of splendid shape. The finest white for bedding, and superb for pots or pans. 70 cts. for 10; \$6.00 per 100

**MON TRESOR.** A 12. Large golden yellow flowers of a pure color. Its best purpose is for growing in pots or pans. 70 cts. for 10; \$6.00 per 100

**MOONBEAM.** B 14. Deep primrose-yellow, shading to soft canary at the edges; very large flower of graceful form. 80 cts. for 10; \$7.00 per 100

**MORNING GLORY.** A 14. Large; coppery orange. Excellent for forcing and early outdoor flowering. \$1.00 for 10; \$9.00 per 100

**PRESIDENT LINCOLN.** B 12. Large flower of clear magenta-violet, slightly paler in tone when grown indoors. A variety that looks well when bedded out with a pale yellow variety. 80 cts. for 10; \$7.00 per 100

**PINK BEAUTY.** C 12. Bright cherry-rose, center of petals striped white. It has no equal as a bedder, for the stem is strong and the white center of the big, fleshy petals shows up very conspicuously against the broad, vivid rose edges. 70 cts. for 10; \$6.00 per 100

**PRINCE OF AUSTRIA.** B 14. Brilliant orange-scarlet, with a clear yellow base. The flower is large and of a very attractive shade when forced. A splendid bedding variety as well. 60 cts. for 10; \$5.00 per 100

**PROSERPINE.** A 14. Rosy carmine, with a white center marked slate-blue; very large globular flower. One of the easiest and earliest forcing Tulips; very sweetly scented. 70 cts. for 10; \$6.00 per 100

**RISING SUN.** B 15. A variety used for exhibition on account of its pure yellow color and wonderful size and substance. The finest golden yellow Early Tulip introduced to date. 70 cts. for 10; \$6.00 per 100

**SARAH BERNHARDT (Le Reve; Hobbema).** Not a new Tulip, but one that always gladdens the heart of the gardener who enjoys planting irregular clumps of late April-blooming Tulips in the herbaceous border. This grand Tulip blooms after the Early Tulips and about 10 days before the Darwins. The color is a glorious shade of pink, quite unlike any other Tulip, and very pleasing in its even tone and yet most interesting on account of its unique color. 75 cts. for 10; \$6.50 per 100

**VAN DER NEER.** B 12. Dark purple flower of a most brilliant tone and splendid shape. 70 cts. for 10; \$6.00 per 100

**VERMILION BRILLIANT.** A 12. Bright, glistening scarlet, with a yellow base; large flower of perfect shape. For early forcing. 70 cts. for 10; \$6.00 per 100

**WHITE HAWK.** A 12. A pure white variety, excellent for forcing or for bedding, lasting in good condition for a long time. 70 cts. for 10; \$6.00 per 100

### S. & W. Co.'s Special Mixture

A mixture consisting of best distinct colors for the cutting garden.

50 cts. for 10; \$4.50 per 100;  
\$42.00 per 1000



# Double Early Tulips

FLOWER JUST AFTER EARLY TULIPS, IN LATE APRIL

Double Tulips are chiefly grown for their showy effects in masses, and are very lasting. Where a display of color is desired they are very satisfactory. Excellent for growing in pots or pans, but should not be forced into bloom very early.

Note.—The letters A, B, and C following the varieties indicate their relative earliness of bloom, but, with few exceptions, most of the

varieties bloom outdoors about the same time when planted in masses. The figures indicate the height in inches.

The following list contains the best novelties extant, as well as a complete list of the best standard varieties. We have discarded quite a number of varieties which no longer grow well.

## **COURONNE D'OR (Crown of Gold).**

B 10. Large, bold flower of rich golden yellow, shaded copper. Excellent for bedding and winter forcing.

70 cts. for 10; \$6.00 per 100

**EL TOREADOR.** B 12. Bright orange-scarlet, with broad margin of buff-yellow. Excellent for pots or bedding.

70 cts. for 10; \$6.00 per 100

**ELECTRA.** B 13. Beautiful deep rose flowers of enormous size, feathered violet. Excellent for exhibition. Height 12 inches.

70 cts. for 10; \$6.00 per 100

**IMPERATOR RUBRORUM.** B 10. Excellent scarlet for bedding and forcing. An excellent variety for the herbaceous border where a strong scarlet tone is desired. Considered the best of the double scarlets.

70 cts. for 10; \$6.00 per 100

**MARECHAL NIEL.** B 11. Soft orange-yellow Tulip of great beauty and substance. The finest in its color for forcing and bedding.

80 cts. for 10; \$7.00 per 100

**MR. VAN TUBERGEN.** B 16. Beautiful golden yellow. Another good sport of that excellent variety, Couronne d'Or. One of the finest, if not the finest of the rich deep yellows.

70 cts. for 10; \$6.00 per 100

**MURILLO.** C 12. Delicate rose-pink, flushed white. Fine for bedding and excellent for forcing.

60 cts. for 10; \$5.00 per 100

**ORANGE NASSAU.** B 12. A rather unusual color in Double Tulips—orange-red. A sport from that popular variety, Murillo. Very effective for planting in beds or borders.

75 cts. for 10; \$6.50 per 100

**PEACH BLOSSOM.** C 12. Bright rose-pink, flushed white, deepening with age to carmine-rose; large. Excellent for pots.

60 cts. for 10; \$5.00 per 100

**SCHOONOORD.** B 12. A beautiful, pure white sport of Murillo, with the same excellent forcing qualities. One of the best double white varieties, if not the best.

70 cts. for 10; \$6.00 per 100

**TRIUMPHATOR.** B 12. A lovely rose-pink, one of the finest for bedding and very beautiful when grown under glass.

75 cts. for 10; \$6.50 per 100

**VAN DER HOEF.** C 12. A beautiful pure yellow sport of the variety Murillo. A fine variety for forcing.

70 cts. for 10; \$6.00 per 100

**VUURBAAK.** B 12. Brilliant scarlet, when fully open the flower gets an orange hue. One of the best orange-scarlets for bedding and excellent for growing indoors as well.

70 cts. for 10; \$6.00 per 100

### **S. & W. CO.'S SPECIAL MIXTURE.**

A mixture consisting of 15 named varieties, blended so as to give an assortment of all possible colors and shades, all of vigorous habit and large size, uniform height and time of blooming.

50 cts. for 10; \$4.50 per 100;

\$42.00 per 1000

# Double Late Tulips

Among the recent advances made by Tulip hybridizers in Holland, the Double Late Tulip may be counted as a distinct achievement from the standpoint of the wonderful peony-like flowers, strong stems, and well-filled blooms. For mass effect in the herbaceous border there are few Tulips that will give such a wonderful display. They bloom during May at the same time as the Darwin, Breeder, and Cottage Tulips.

**ATTRACTION.** The showy and attractive peony-like flowers are an orange color, edged bright yellow. Height 26 inches.

\$1.20 for 10; \$11.00 per 100

**BLEU CELESTE.** Large, soft violet-purple flowers of a very pleasing color. A fine Tulip for cutting and excellent for planting in the herbaceous border. Height 14 inches.

80 cts. for 10; \$7.00 per 100

**EPICURE.** One of the finest new Double Late Tulips. Its color strikes a new note in Tulip shades and it is best described as an even tone of rich apricot-salmon that looks attractive in the bright sunshine and is very pleasing under artificial light. Height 20 inches.

90 cts. for 10; \$8.00 per 100

**PENSEE ROSE.** Another Tulip of unique color, which is perhaps best described as a deep rose-lavender. The large, well-formed flowers are borne on stems 24 inches tall.

\$1.30 for 10; \$12.00 per 100

**MOUNT TACOMA.** In form this Tulip is somewhat on the order of a semi-double pure white peony, the petals being slightly lacinated. Another real gem for the herbaceous border on account of its well-formed flower and large size. Height 26 inches.

\$2.90 for 10; \$28.00 per 100

**UNCLE TOM.** Large, peony-like flowers of a uniform deep glossy red. A Tulip that makes a grand display in the border. Height 24 inches.

\$1.90 for 10; \$18.00 per 100



Double Tulips

## **BYBLOEM AND BIZARRE TULIPS**

Bybloem and Bizarre Tulips are of the Breeder type, but queerly striped and feathered, many of the varieties being most unique and attractive. These are the Tulips of the famous "Tulip Craze" of 1635. Height 18 to 23 inches.

**Rose Bybloems, Mixed Bizarres, Mixed Violet Bybloems, Mixed**  
70 cts. for 10; \$6.00 per 100

## **REMBRANDT TULIPS**

Each year many of the best varieties of Darwin Tulips show a tendency to "break" or become variegated. On account of their odd colorings and variegations, these broken or Rembrandt Tulips are sometimes preferred and possess splendid decorative value. They average 18 to 22 inches in height.

**REMBRANDT TULIPS, MIXED.**  
70 cts. for 10; \$6.00 per 100

# Parrot Tulips

These peculiarly formed and brilliantly colored Tulips are ideal for home decoration.

**FANTASY.** A sport of the Darwin Tulip, Clara Butt; exactly the same beautiful true pink, except that the inside color is even more intense—a delightful warm pink, thrilling to the eye of the Tulip-lover. The petals of this quaint flower are lacinated and the outside, or back, is artistically marbled with apple-green. Fantasy grows the same height as Clara Butt and blooms at the same time outdoors. Height 27 inches.

70 cts. for 10; \$6.00 per 100

**CAPRICIO.** A break from the variety Fantasy. Salmon-pink, feathered and flamed white—a very unique and fascinating color. Height 26 inches.

\$2.20 for 10; \$20.00 per 100

**GADELAN.** Violet and mauve, with purple shadings, center white. A beautiful violet Parrot Tulip. Frequently exhibited at flower shows. Height 23 in.

\$3.00 each

**LADY DERBY.** Very similar to Fantasy but lilac in color. The petals are slightly lighter towards the edges. Height 26 inches.

\$1.50 for 10; \$14.00 per 100

**THERESE.** A sport of the fine red Farncombe Sanders. Bright cochineal-carmine, inside cerise-scarlet, white center marked blue. Height 28 inches.

\$2.00 each

**S. & W. CO.'S MIXED PARROT TULIPS.** A mixture of the original shorter-stemmed Parrot Tulips in all the interesting colors.

80 cts. for 10; \$7.00 per 100

# Botanical Tulips and Species

American gardeners are just beginning to appreciate the resources of the wild Tulips or species. A wide range of brilliant color is represented in their various forms, and they are very permanent plants when once established. Being natives of southern Europe and western Asia, they are accustomed to hot, dry locations, particularly after blooming-time, and should be given sheltered locations exposed to the sun, with the freest possible drainage. Do not fertilize the soil; do not protect them; plant them very deep and let them alone ever after. These Tulips are at home on steep, gravelly slopes or well-drained, sunny places in large rock-gardens; but most of them are too large and too gorgeous for the tiny "rockery." They bloom early and continue for many days. Plant them in clumps, not in serried ranks. We offer only the varieties which do well in this country.



CLUSIANA



KAUFMANNIANA

**ACUMINATA (Cornuta; Stenopetala).** This variety has very narrow petals, ending in a threadlike point at the top. The color is yellow, streaked red, very showy and attractive. Height 18 inches.  
\$1.30 for 10; \$12.00 per 100

**AUSTRALIS.** An April-flowering type, with sweetly scented flowers; yellow tinged with reddish bronze on the outside of the petals. An unusual species. Height 16 inches. 90 cts. for 10; \$8.00 per 100

**CLUSIANA.** The "Little Lady" Tulip. A lovely little variety which originated in Asia Minor. Grows about 8 inches high; flowers as large as a crocus. Outer petals cherry-red, inner petals white with violet base. Should be planted 8 to 9 inches deep in light soils in a sheltered place. Excellent bulb for the rock-garden.  
70 cts. for 10; \$6.00 per 100

**DASYSTEMON.** A dwarf variety very suitable for rock-gardens. Flowering in early April, they are very charming. The flowers, yellow in color, marked white, are produced freely, several blooms to each plant. Height 6 inches. \$1.60 for 10; \$14.00 per 100

**EICHLERI.** This splendid Tulip from Turkestan produces large crimson-scarlet flowers with a glistening black center marked with gold. Height 12 inches. 70 cts. for 10; \$6.00 per 100

**FLORENTINA ODORATA (Sylvestris).** Fragrant, rich yellow flowers, frequently two to a stem, with bronze interior, carried on slender stems. An interesting species. Height 18 inches.  
70 cts. for 10; \$6.00 per 100

**FOSTERIANA.** A large variety from Bokhara, bearing flowers of a glowing scarlet with center either yellow or maroon and yellow, with the petals long and pointed. Blooms outdoors in early April. Height 9 inches. \$2.00 for 10; \$18.00 per 100

**FOSTERIANA, RED EMPEROR.** A much improved Fosteriana. The largest and most brilliant Tulip listed in our Catalogue. An immense flower of a glossy orange-scarlet, carried on a fine strong stem. Blooms indoors in February, outdoors in April. Height 18 inches. 50 cts. each; \$4.50 for 10; \$40.00 per 100

**GREIGI.** Flowers very large, brilliant orange-scarlet, with yellow and black center. The curious feature of this Tulip is that the foliage is of a very distinct character, being spotted maroon. Blooms late in April or early in May. Stocks of good quality very scarce this year. Height 10 inches. \$4.50 for 10; \$40.00 per 100

**KAUFMANNIANA.** One of the earliest of all the Tulips to come in flower. Creamy white, tinged rosy red, the markings varying. The flowers are very attractive, large in size, with petals reflexing. Sometimes called the "Water-Lily Tulip" from the resemblance of the partially opened flowers to those of the Nymphæas. A splendid Tulip in every way for outdoor planting or indoor growing. Blooms outdoors in early April. \$1.00 for 10; \$9.00 per 100

**LINIFOLIA.** Charming for the rock-garden. Narrow, undulated leaves and small, brilliant scarlet-vermilion flowers with black bases. Height 8 inches. \$5.00 for 10; \$45.00 per 100

**MARJOLETTI.** Pale yellow, mottled toward the outer petals with scarlet. A lovely species, which blooms outdoors during late April. Height 14 inches. 80 cts. for 10; \$7.00 per 100

**PERSICA (Breyniana).** Yellow, outside bronze. Dwarf and late. Two or three flowers on one stem. Height 8 inches. \$3.50 for 10; \$30.00 per 100

**PRÆSTANS.** Orange-red flowers early in April. When fully open, they are a pretty scarlet and measure 6 inches across. The stems and leaves are covered with soft white hairs. Produces as many as six, and even eight, flowers to a stem. Height 14 inches. \$1.00 for 10; \$9.00 per 100

**SPRENGERI.** Flowering in late May, this variety is the latest Tulip to bloom. It is a native of Armenia and the flowers are fiery orange-scarlet, shaded buff and orange, with golden anthers. Height 18 inches. \$8.00 for 10; \$75.00 per 100

**VIRIDIFLORA PRAECOX.** Known as the Green Tulip. The flowers are pale green, edged creamy yellow; narrow-petaled flowers that open quite wide. Height 20 inches. \$2.50 for 10; \$22.00 per 100



# Matchless Bedding Hyacinths

SPECIAL NAMED VARIETIES IN DISTINCT SHADES OF COLOR, TO FLOWER AT THE SAME TIME

*BULBS MEASURE 6 TO 7 INCHES IN CIRCUMFERENCE*

The Hyacinth chosen to represent each of the following shades of color is a variety which we have found from trials will be best in the three essential requirements: Best in its color; stoutest stem; largest truss of bells; so our patrons will know that we have avoided using varieties that are of weak stem, and that do not support the blooms.

**CULTURE.** These Hyacinths should be planted from 6 to 10 inches apart, and covered with at least 4 inches of soil from the top of the bulb. For beds or borders close to the conservatory or dwelling, 6 inches will make a fine display; but where the beds are planted to be viewed from a distance, they may be planted 10 inches apart. Hyacinths planted alternately with narcissi produce a most graceful

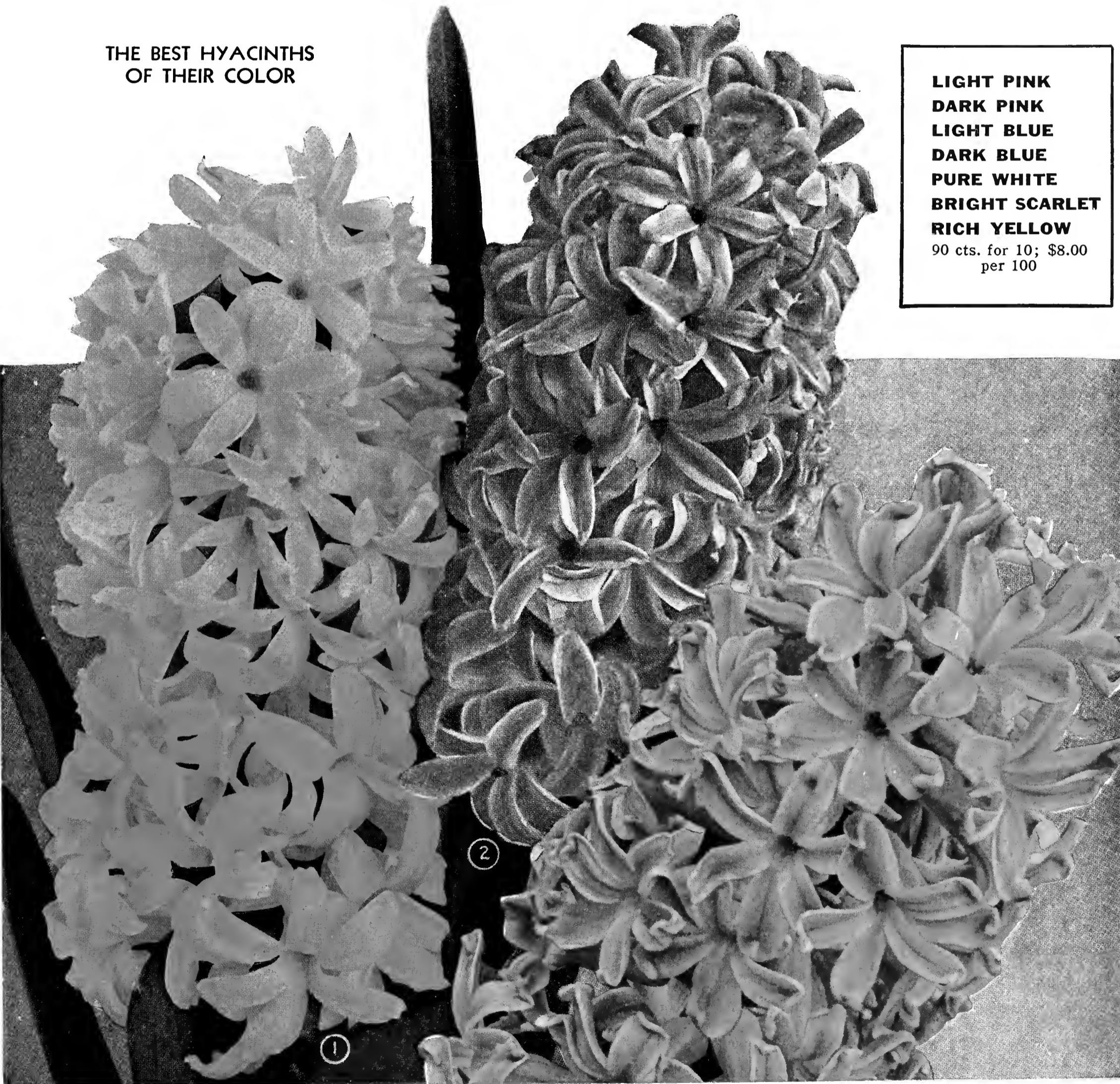
effect, and for this combination 6 inches from bulb to bulb is also a very suitable distance.

Hyacinths, as well as narcissi, should be planted by November first in this latitude, as they are the better for early planting. Tulips may be planted up to December first, weather permitting.

THE BEST HYACINTHS  
OF THEIR COLOR

**LIGHT PINK**  
**DARK PINK**  
**LIGHT BLUE**  
**DARK BLUE**  
**PURE WHITE**  
**BRIGHT SCARLET**  
**RICH YELLOW**

90 cts. for 10; \$8.00  
per 100



Matchless Rich Yellow

Matchless Light Blue

Matchless Dark Pink



# Exhibition Hyacinths



Exhibition Hyacinths

Every year our growers prepare to select the finest grade of Hyacinths for us for exhibition. These bulbs are of maximum size, and fully aged for this purpose. The varieties listed below are grown especially for us, and intending exhibitors at the International Flower Show next spring will be interested in our selection of varieties which we believe, when grown for exhibition, should capture First Premiums. The Hyacinth enthusiast who is interested in novelty varieties will also find this list valuable.

We offer only the best sorts. There are several hundred varieties grown abroad but we do not consider that there are over thirty of them worth growing. Bulbs such as we supply should be planted singly in a 5-inch pot, or four bulbs to an 8-inch bulb-pan. As there is a slight variation in the time of flowering between the different varieties, we have, therefore, indicated the relative time of blooming, 1 being early, 4 the latest.

**BLEU AIMABLE.** 2. A very beautiful novelty. Large bells of pale light blue. A fine exhibition variety.

30 cts. each; \$2.75 for 10; \$25.00 per 100

**CITY OF HAARLEM.** 2. Fine yellow variety, with strong stem and a good head of bloom. Soft Naples yellow, shaded deeper.

**DR. LIEBER.** 2. Suitable alike for forcing and outdoor planting. The large, nicely filled spikes are composed of numerous bells of pale lavender-blue, shaded dark violet.

**DR. STRESEMAN.** 2. A very fine exhibition variety. The large bells are a deep blue and are carried on fine trusses.

30 cts. each; \$2.75 for 10; \$25.00 per 100

**DUKE OF WESTMINSTER.** 2. An unusual color—clear dark blue bells with white centers. While a dark shade of blue it is most outstanding because of its bright, attractive tone.

**ENCHANTRESS.** 2. Full, long truss with large bells of pale porcelain, tinted lilac, brighter center. Splendid for exhibition.

**GRAND MAITRE.** 2. Probably the most widely used variety in its color. Dark lavender-blue, with bells of good size, and large, well-filled spikes, held on strong stems.

**IMPERATOR.** 2. A beautiful deep shade of rose, darker in the center of the bells. Large fine spike. Excellent for exhibition.

30 cts. each; \$2.75 for 10; \$25.00 per 100

**KING OF THE BLUES.** 4. A fine variety both for outdoor planting and indoor forcing. In color, an attractive bright dark blue, with large spikes and fine bells.

**L'INNOCENCE.** 1. A white variety extensively grown. The bells are pure white and of good substance; trusses are well filled and held on strong stems.

**LA GRANDESSE.** 3. Perfectly formed spikes of pure white. The florets are of waxy substance and most gracefully placed on long stems.

**LA VICTOIRE.** 1. A brilliant, almost vividly colored Hyacinth of attractive luminous carmine-rose. The bells are of medium size but are numerous and form a nicely filled spike. One of the finest for bedding or pots.

**MARCONI.** 2. A variety that compares in all-round quality with Lady Derby, but of a rather darker shade—bright, deep rose, suffused white. Good stems and trusses.

**ORANGEBOVEN.** 3. A rather dainty variety of remarkable color—pale salmon-pink, tinged with ruddy apricot. Truss of medium size.

**LADY DERBY.** 1. Considered the finest rose-pink Hyacinth. Its sturdy stems hold erect, large, full heads of clear rose-pink. Excellent for forcing and unsurpassed as a bedding variety.

**MYOSOTIS.** 2. Light blue, suffused with violet. The bells are not very numerous, but are gracefully arranged on a strong stem.

**PRINCESS MARGARET.** 1. This new variety is one of the most pleasing of the soft pink tones. Very large, well-formed bells carried on a fine strong stem. One of the best pink Hyacinths in size and color. 25 cts. each; \$2.25 for 10; \$20.00 per 100

**QUEEN OF THE PINKS.** 3. Clear, bright rose-pink, with nicely formed trusses, well filled with medium-sized bells.

**QUEEN OF THE WHITES.** 2. The handsome pure white bells are thickly set on the truss. Excellent for exhibition.

**TUBERGEN'S SCARLET.** 1. Fiery scarlet spike of medium size. Bulbs somewhat smaller than other varieties. Excellent on account of its vivid and striking color. 30 cts. each; \$2.75 for 10; \$25.00 per 100

**YELLOW HAMMER.** 1. A fine yellow variety for pot-culture. Creamy yellow, with a well-filled truss of large bells.



French Roman Hyacinths

## French Roman Hyacinths

French Roman Hyacinths are among the earliest bulbs to be had in flower. The bulbs arrive from France late in August, and they may be had in flower from November all through the winter months, if potted up in September and at intervals of every two weeks. They are much prized for pots or cutting on account of their graceful appearance and delicate fragrance.

**WHITE.** Mammoth bulbs, 13 to 14 cms. \$1.00 for 10; \$9.00 per 100  
Jumbo bulbs, 14 to 15 cms. \$1.25 for 10; \$11.00 per 100

**SINGLE ROSE.** First-size bulbs. 90 cts. for 10; \$8.00 per 100

**VIRGINIA.** Fine new light blue. Mammoth bulbs. \$3.00 for 10; \$26.00 per 100

**Price of above varieties unless otherwise noted.** We place large contracts for the above varieties and thus secure the pick of the crop. This enables us to offer at a uniform price of 20 cts. each; \$1.90 for 10; \$17.00 per 100.



# Hardy Lilies

There is a great deal of confusion and misunderstanding among otherwise competent gardeners concerning Lilies. Since they are becoming more popular every year, and great numbers of them are being planted, perhaps it is well to make plain that there are two broad classes of Lilies with respect to their roots.

One class forms roots at the base of the bulb only; these should be planted relatively shallow, not more than twice the depth of the bulb itself. The other class forms roots both at the base of the bulb and from the stem above it; these should be planted three to four times the depth of the bulb, or, in most cases, 6 to 10 inches deep.

All Lilies like perfect drainage. Most of them prefer the light shade over their new shoots that is afforded by mulch and low-growing plants or shrubs, above which they can rise and display their blossoms to the sun. A few of them prefer a very moist situation, but it must be so arranged that all dampness drains immediately away from the bulb. This can be managed by planting them upon a small heap of stones. *All Bulbs do better if a handful of sharp builders' sand is placed immediately beneath the bulb to help provide better drainage.*

No Lily succeeds in manured ground. They vary in their preference for lime. Some are poisoned by it, others thrive in it, some are indif-

ferent. We shall endeavor to state all these facts concerning each variety in the descriptions which follow.

The approximate order in which the Lilies described here bloom is as follows. This order has been determined by watching them for several seasons. It may vary according to whether the Lilies have a northern or a southern exposure, much or little shade, and according to the vagaries of the different seasons. In average years they bloom in about this succession.

**June:** *Tenuifolium*, *Hansoni*, *Davuricum*, *Elegans*, *Martagon*, *Chalcedonicum*, *Umbellatum*, and *Umbellatum*, *Golden Fleece*.

**June-July:** *Candidum*, *Humboldti magnificum*, *Croceum*, *Testaceum*, *Regale*, *Pardalinum*, *Pardalinum giganteum*, and *Washingtonianum*.

**July:** *Superbum*, *Canadense*, *Grayi*, *Carolinianum*, *Batemanniæ*, *Krameri*, *Philadelphicum*, *Philippinense formosanum*, *Rubellum*.

**July-August:** *Auratum*, *Auratum platyphyllum*, *Auratum pictum*, *Henryi*.

**August and Later:** *Speciosum*, *Sulphureum*, *Tigrinum*.

**AURATUM.** Golden-banded Lily of Japan. This is the largest and, many think, the most gorgeous of all. The flowers are enormous (often 8 to 10 inches across), bell-shaped, with slightly flaring and waved petals, each thickly dotted with bristly maroon spots and marked by a showy bright yellow band down the center. They are intensely fragrant and come in tremendous clusters at the top of a strong, leafy stem. Excellent specimens may reach a height of 6 or more feet, with more than a dozen perfect blooms open at one time. They bloom in July and August, are stem-rooting, and should be planted quite deep. The ground should be covered with some low-growing plant, but the flowers must be able to rise above the undergrowth into full sunshine. These Lilies are most stately and magnificent, and in the evening, particularly on moonlight nights, array themselves in an almost unearthly beauty. At night the whole garden is pervaded with their delicious perfume.

Bulbs, 8 to 9 in. circum. 25 cts. each; \$2.25 for 10; \$20.00 per 100  
Bulbs, 11 to 13 in. circum. 45 cts. each; \$4.00 for 10; \$35.00 per 100

**AURATUM PLATYPHYLLUM.** The tallest and largest of the Auratums, with broader, darker leaves and larger flowers similar to Auratum, but it lacks the red spots, leaving a pure white bloom with a yellow band. Plant deep.

Bulbs, 8 to 9 in. circum. 40 cts. each; \$3.50 for 10; \$30.00 per 100  
Bulbs, 11 to 13 in. circum. 50 cts. each; \$4.50 for 10; \$40.00 per 100

**BATEMANNIÆ.** Batemann Lily. Like *L. elegans* in habit, with erect, chalice-shaped flowers of rich apricot color produced in July. It grows 3 to 4 feet high, with the flowers held upright on the top, and seems to enjoy ordinary garden soil in full sunlight, with a ground-cover. While it is stem-rooting, it need not be planted so deep as most. 30 cts. each; \$2.50 for 10; \$20.00 per 100

**CANDIDUM.** Madonna Lily. One of the oldest plants cultivated in gardens. It is sculptured on some of the most ancient vases dug up in Crete, where a civilization antedating that of the most ancient Egyptians flourished 5000 years ago or more. It is a symbol of purity and all things lovely. The plants make healthy evergreen rosettes of leaves in the autumn, from which stout stems, clothed with short leaves, arise in spring, bearing spire-like clusters of pure white, starry Lilies beautifully illumined by brilliant yellow anthers. They, too, are deliciously sweet, but are not so overpoweringly fragrant as some others, and may be cut and brought into the house with comfort. It blooms in June, immediately before the Royal Lily, at the same time as Delphinium Belladonna, with which it is frequently combined. As it is base-rooting only, it should be planted shallow. It likes good, well-limed garden soil and a sunny exposure. The best bulbs are those which we import from northern Europe. They should be planted as soon as received, preferably in October.

First-size Bulbs. 20 cts. each; \$1.50 for 10; \$12.00 per 100  
Mammoth Bulbs. 30 cts. each; \$2.50 for 10; \$22.00 per 100  
Jumbo Bulbs. 40 cts. each; \$3.50 for 10; \$30.00 per 100

**CAROLINIANUM.** The Southern Swamp Lily. This is a near relative of the Turk's-Cap Lily, *L. superbum*, but smaller and a little lighter in color. It grows 2 to 4 feet high, likes moist ground, but good drainage, and will endure almost total shade. The fragrant flowers are orange-crimson with a whitish throat and hang like bright red bells at the top of the stem. Likes acid soil and deep planting. Blooms in July.

35 cts. each; \$3.00 for 10; \$25.00 per 100

**CANADENSE.** The red Meadow Lily of fields and roadsides. In July, its tall stems, 3 to 8 feet high, bear great sprays of nodding, bell-like, bright orange-crimson flowers dotted with maroon. It is stem-rooting, likes moist, well-drained ground.

20 cts. each; \$1.80 for 10; \$15.00 per 100

**CHALCEDONICUM.** The Scarlet Turk's-Cap Lily. A slender, erect Lily, 2 to 4 feet high, bearing, in late June and July, three to six nodding, brilliant scarlet flowers with sharply reflexed petals faintly dotted purple and having scarlet anthers. Very showy and graceful. Likes dry, ordinary garden soil and full sunlight. Plant 5 inches deep and do not disturb it afterward.

\$1.75 each; \$16.00 for 10; \$150.00 per 100

**CROCEUM.** Beautiful, orange, upright, cup-shaped blooms, borne in large cluster on a strong, straight stem. Blooms June and July. Stem-rooting; plant 5 inches deep.

40 cts. each; \$3.50 for 10; \$30.00 per 100

**DAVURICUM.** See *Umbellatum*.

**ELEGANS, ALICE WILSON.** Erect, dwarf plant, 1 to 2 feet high, with upright flowers of bright lemon-yellow, very bright and showy in June. Plant shallow in light soil in full sun. Good for naturalizing or rock-gardens. 30 cts. each; \$2.50 for 10; \$20.00 per 100

**ELEGANS ATROSANGUINEUM.** Similar to Alice Wilson in habit and needs the same treatments, but the flowers are dark blood-red with purple dots.

30 cts. each; \$2.50 for 10; \$20.00 per 100

**GRAYI.** Gray's Lily. Modest, bell-shaped flowers of orange-brown outside and bright red-orange and yellow inside, thickly powdered with darker dots. Grows 2 to 4 feet high, likes moist, loamy soil and a sunny place, such as a stream-bank. Blooms in July. Plant 4 inches deep. 35 cts. each; \$3.00 for 10; \$25.00 per 100

**HANSONI.** Hanson's Lily. Delicately fragrant, nodding flowers of pale yellow-orange, with thick, waxen, recurved petals, in clusters above broad whorls of leaves on stems 2 to 4 feet high. Likes shade, moist soil and blooms very early in June. Plant moderately deep. 40 cts. each; \$3.50 for 10; \$30.00 per 100

**HENRYI.** Henry's Lily or the Yellow Speciosum. A very lovely flower of the Speciosum type. It grows 8 to 10 feet high or more in favorable places, and likes to root among low shrubs, sending its tall stems up into the sunlight where its bright apricot-yellow flowers may show at their best. Ordinary soil suits it, and moderately deep planting. Blooms in July and August. Strong Bulbs. 35 cts. each; \$3.00 for 10; \$25.00 per 100

**HUMBOLDTI MAGNIFICUM.** A strong-stemmed Lily 4 to 6 feet high, with brilliant orange-yellow flowers, spotted purple. Differs from Humboldti in that the spots are ringed with crimson, the foliage is darker, and it is a much stronger grower. Blooms June and July. Base-rooting; plant 5 inches deep. 80 cts. each; \$7.00 for 10; \$60.00 per 100

**KRAMERI** (*L. japonicum*). A lovely, big, pink Lily of true trumpet form, carried beautifully on stem about 2 to 3 feet high, but not very strong. It likes good, rich, peaty soil, with plenty of moisture and good drainage. Blooms in late July. Plant deep. 35 cts. each; \$3.00 for 10; \$25.00 per 100

LILIUM  
SPECIOSUM  
ALBUM



Pure white. August-blooming  
For description, see page 26



Lilium speciosum magnificentum  
Pink. August-blooming  
For description, see page 26

*Four*

## LOVELY HARDY GARDEN LILIES

**SPECIAL COLLECTION OFFER:**

20 bulbs, 5 each of 4 varieties (value \$4.30) \$3.50 • 40 bulbs, 10 each of 4 varieties (value \$8.55) \$6.50



Lilium umbellatum grandiflorum erectum  
Vivid orange-scarlet. June-blooming  
For description, see page 26



Lilium philippinense formosanum  
Trumpet shape. White. September-blooming  
For description, see page 26



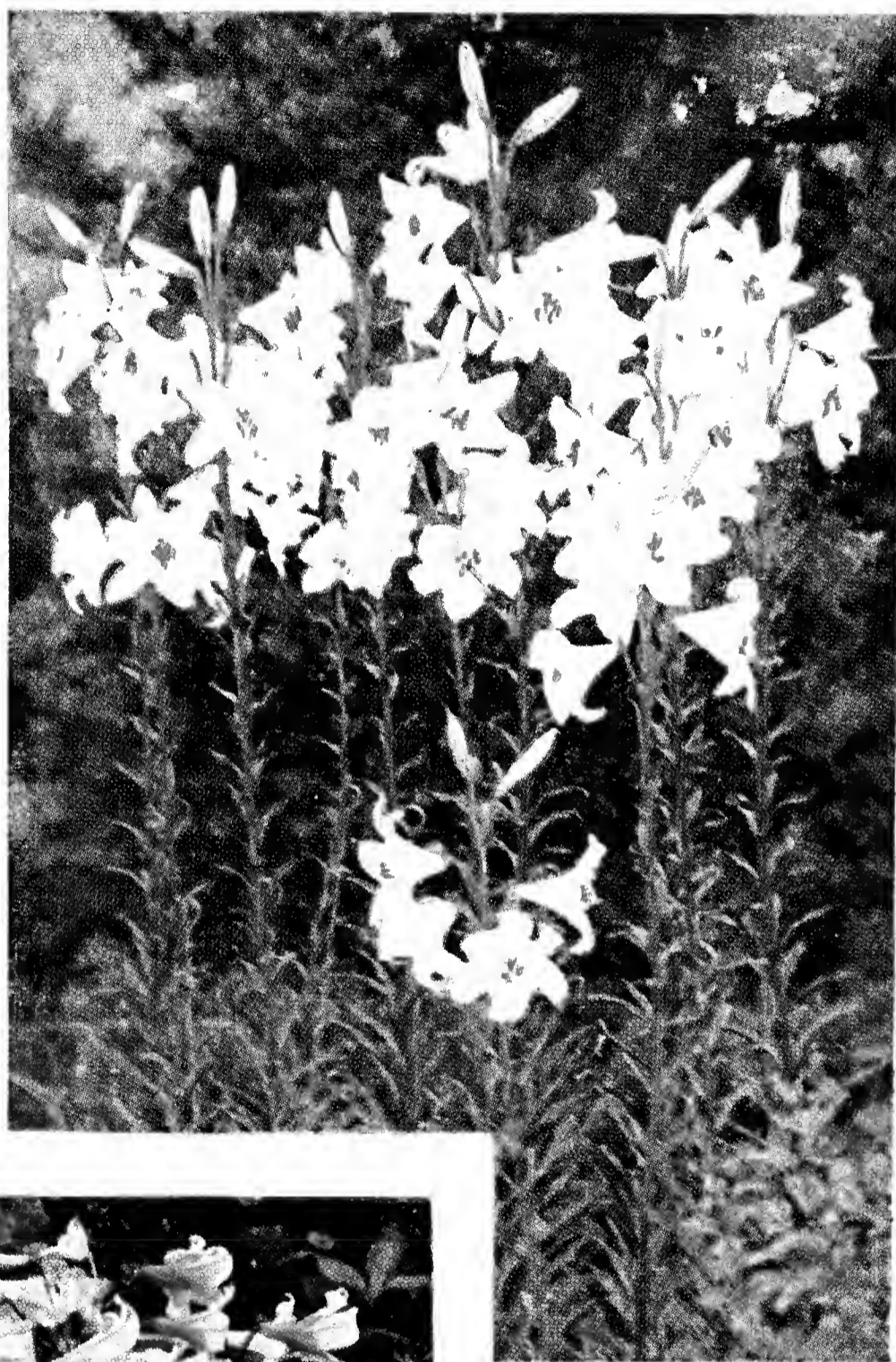
# Three Fine Hardy Lilies — for June and July Blooming



## Madonna Lily (*Lilium candidum*)

One of the oldest inhabitants of gardens and still the loveliest of all white Lilies, with a purity unmatched by any other flower and an exquisite grace which gives it dignity and charm, both in the garden and when cut. Madonna Lilies growing with delphiniums is a classic garden picture, but they are equally beautiful combined with dark velvety red sweet williams or crimson roses. Plant the bulbs as early as you can get them in the autumn, covering the crowns with about 2 inches of soil; do not disturb thereafter unless absolutely necessary.

**First size**.....20 cts. each; \$1.50 for 10; \$12.00 per 100  
**Mammoth size**..30 cts. each; \$2.50 for 10; \$22.00 per 100  
**Jumbo size**.....40 cts. each; \$3.50 for 10; \$30.00 per 100



## Hanson's Lily (*Lilium Hansonii*)

Delicately fragrant, nodding flowers of pale yellow-orange, with thick, waxen, recurved petals, in clusters above broad whorls of leaves on stems 4 to 5 feet high. Plant among shrubs and low plants to protect young shoots, this being one of the earliest Lilies to appear in the spring. Does as well in thin woodland as in the border. Bulbs should be planted 8 inches deep.

**40 cts. each; \$3.50 for 10; \$30.00 per 100**



## Royal Lily (*Lilium regale*)

A gorgeous new Lily from the wilds of Tibet and western China, with enormous alabaster trumpets tinged with rose outside and suffused with gold within. This is becoming the most popular of all white Lilies, and the easiest to grow. Plant the bulbs about 6 inches deep and leave them alone forever after.

**6 to 7 in. circum., 15 cts. each;**  
**\$1.20 for 10; \$10.00 per 100.**  
**7 to 8 in. circum., 20 cts. each;**  
**\$1.80 for 10; \$15.00 per 100.**  
**8 to 9 in. circum., 30 cts. each;**  
**\$2.80 for 10; \$25.00 per 100.**  
**9 to 10 in. circum., 40 cts. each;**  
**\$3.80 for 10; \$35.00 per 100.**



## HARDY LILIES, continued

**MARTAGON.** The Purple Lily. Small, turban-shaped flowers of dull purple, in great pyramidal sprays on a strong stem 2 to 5 feet high. Blooms in June. Likes cool, damp places with much shade. Plant shallow. 40 cts. each; \$3.50 for 10; \$30.00 per 100

**PARDALINUM.** The California Leopard Lily. Tall and striking, with rich orange-red flowers having back-flared petals, and strongly marked by purple spots ringed lighter. It blooms in June and July and likes deep, rich, woody soil. Plant 5 inches deep. 35 cts. each; \$3.00 for 10; \$25.00 per 100

**PARDALINUM GIGANTEUM.** A magnificent Lily native to the Pacific Coast. Tall-growing, 6 to 8 feet, with giant flowers, outer petals scarlet-orange; inner half bright yellow, dotted purple-brown. In color more brilliant than the type and a much more robust grower. 60 cts. each; \$5.50 for 10; \$50.00 per 100

**PHILADELPHICUM.** Wood Lily. A wild Lily of the eastern states, thriving in dry, sandy places with partial shade. The short stalks are 1 to 2 feet high, with dark red, erect flowers in July. Plant moderately deep. 35 cts. each; \$3.50 for 10; \$25.00 per 100

**PHILIPPINENSE FORMOSANUM.** In reality a hardy Easter Lily. Grows 1½ to 2 feet tall, with large, white, trumpet-shaped blooms, suffused on the exterior with reddish brown. Possesses a delightful fragrance. Blooms in September. Stem-rooting; plant 8 inches deep. Perfectly hardy and wonderfully prolific. 20 cts. each; \$1.80 for 10; \$15.00 per 100

**REGALE.** The Royal Lily. A very hardy, easily grown variety from the mountains of western China, and one of the most glorious of all. The flowers are gigantic, of true Lily shape, with long, waxen petals, recurved at the tips, and lightly frilled along the edges. In effect it is pure white, but the center of the flower is richly suffused with golden yellow and the brilliant orange-yellow anthers are large and showy. The outside of the buds and the three outer petals are stained with purple-brown, which often gives a faint pinkish value to the flowers seen in quantity. Unequaled for magnificent effect. Stem-rooting; plant moderately deep. First-size Bulbs, 6 to 7 in. circum. 15 cts. each; \$1.20 for 10; \$10.00 per 100

Mammoth Bulbs, 7 to 8 in. circum. 20 cts. each; \$1.80 for 10; \$15.00 per 100

Jumbo Bulbs, 8 to 9 in. circum. 30 cts. each; \$2.80 for 10; \$25.00 per 100

Monster Bulbs, 9 to 10 in. circum. 40 cts. each; \$3.80 for 10; \$35.00 per 100

**RUBELLUM.** A smaller form of *L. Krameri*, which it resembles, but is much more dependable. It blooms in July and requires the same treatment. 40 cts. each; \$3.50 for 10; \$30.00 per 100

**SPECIOSUM MAGNIFICUM.** This is the finest of the showy Lilies and better than either *Rubrum* or *Melpomene*. In general, the flowers are somewhat like those of *L. auratum*, somewhat smaller, with narrower and more twisted petals. The main color is white, clouded, banded, and spotted with beautiful crimson and pink, giving the effect of some rare orchid. The plants are strong, with long, handsome leaves, grow 3 to 5 feet high, and bear great loose sprays of magnificent, delicately scented flowers in August and September. This is an easy Lily to grow, succeeding in half shade or sun, provided the lower part of the stems is sheltered. As it is stem-rooting, it should be planted deep, and seems to like light, slightly acid soil best, although good results may be had in ordinary garden ground. Bulbs, 8 to 9 in. circum. 25 cts. each; \$2.25 for 10; \$20.00 per 100  
Bulbs, 11 to 13 in. circum. 45 cts. each; \$4.00 for 10; \$35.00 per 100

**SPECIOSUM ALBUM.** Slightly smaller in growth than *Magnificum*, but bears its fragrant, frosty blossoms in greatest profusion. They are snowy white with a deep emerald-green crease at the base of each petal, and showy yellow anthers. Bulbs, 7 to 8 in. circum. 35 cts. each; \$3.00 for 10; \$25.00 per 100  
Bulbs, 8 to 9 in. circum. 50 cts. each; \$4.50 for 10; \$40.00 per 100

**SULPHUREUM.** Large, trumpet-shaped flowers of pale sulphur-yellow, marked and suffused on the outside with red. Its unusual color and heavy fragrance make it an outstanding Lily. Blooms in September. Stem-rooting; plant 10 inches deep. We offer large, selected bulbs. \$1.50 each; \$12.50 for 10; \$100.00 per 100

**SUPERBUM.** The Turk's-Cap Lily. It grows 5 to 8 feet high, with an immense, pyramidal cluster of brilliant orange-red, turban-shaped flowers, yellowish inside and spotted brown. Plants 6 inches deep. 30 cts. each; \$2.50 for 10; \$20.00 per 100

**TENUIFOLIUM.** Coral Lily. A dwarf, very graceful Lily, with thread-like leaves and clusters of nodding, tiny, bell-like, recurved flowers of brilliant coral-red in June. Likes damp soil among rocks, with access to sunlight above. Plant 6 inches deep. 15 cts. each; \$1.20 for 10; \$10.00 per 100

**TENUIFOLIUM, GOLDEN GLEAM.** A pure yellow form of this beautiful Lily. 40 cts. each; \$3.50 for 10; \$30.00 per 100

**TENUIFOLIUM CERNUUM.** A beautiful pink form of this Lily. 35 cts. each; \$2.50 for 10; \$20.00 per 100

**TESTACEUM.** Nankeen Lily. Of the same general habit as *L. candidum*. The stalks grow 3 to 6 feet tall and bear three to more than a dozen very charming, nodding, *Turk's-Cap* flowers, white outside, dusky orange or pale apricot within. Give same treatment as *L. candidum*. Blooms in June and July. \$1.25 each; \$11.00 for 10; \$100.00 per 100

**TIGRINUM.** The Tiger Lily is well known, with its showy, spotted red-orange flowers in wayside gardens in August and later. Very easy to grow, thriving in full sun in any soil. Plant shallow. 25 cts. each; \$2.00 for 10; \$18.00 per 100

**TIGRINUM FLORE-PLENO.** The double Tiger Lily is even showier and more handsome in a way than the original. It blooms a little later and requires the same treatment. 25 cts. each; \$2.00 for 10; \$18.00 per 100

**UMBELLATUM GRANDIFLORUM ERECTUM.** Vivid orange-scarlet flowers held upright and produced in June. Of easy culture and particularly suited for the border. Plant shallow in full sunlight in well-drained soil. Blooms during June. Large bulbs. 20 cts. each; \$1.50 for 10; \$12.00 per 100

**UMBELLATUM, GOLDEN FLEECE.** An Umbellatum variety of rich golden yellow, the tips of the petals marked with scarlet. A strong, robust grower. Requires the same culture as Umbellatum. \$1.25 each; \$10.00 for 10; \$90.00 per 100

**WASHINGTONIANUM.** Opens white, changing to varying shades of wine-color, slightly spotted deeper. Remarkably robust, free-blooming, and wonderfully fragrant. Blooms June and July. Stem-rooting; plant 10 inches deep. 65 cts. each; \$6.00 for 10; \$50.00 per 100

## Lily Bulbs for Indoor Growing

### CALLA LILIES

Use a stiff, clayey soil with a small quantity of shredded cow-manure. Bulbs should be set with the top protruding just above the surface. When in growing condition, warm water given several times during the week will hasten the flowering period and increase the number of blooms. When using the large-sized bulbs, plant but one in a pot; smaller ones, two. The Yellow Calla is one of the grandest varieties in cultivation, and most valuable for house or conservatory decoration. Plant Callas indoors only in the fall of the year.

#### WHITE CALLA LILY.

Jumbo size. 50 cts. each; \$4.50 for 10; \$40.00 per 100  
Mammoth size. 40 cts. each; \$3.50 for 10; \$30.00 per 100  
First size. 25 cts. each; \$2.25 for 10; \$20.00 per 100

**YELLOW CALLA LILY.** A grand novelty—one that should be planted extensively. The deep golden yellow flowers are truly magnificent and produced in abundance. The green foliage is spotted creamy white, which adds to its beauty.

First-size Bulbs. 25 cts. each; \$2.25 for 10; \$20.00 per 100  
Mammoth Bulbs. 50 cts. each; \$4.50 for 10; \$40.00 per 100

### EASTER LILIES

We offer three distinct types of Easter Lilies: *Lilium Harrisii*, a very popular variety; *L. Erabu, Improved*, which can be had in flower from Christmas to Easter; and *L. giganteum*, an extra-fine Lily for cutting. Our reselected bulbs are used by leading exhibitors at the spring flower shows in New York, Boston, and Philadelphia.

	Case of 10'	25	100
	Bulbs	Bulbs	Bulbs
<b>LILIUM HARRISII.</b> July delivery.			
Bulbs, 7 to 9 in. circum. . . . .	\$3 50	\$7 50	\$25 00
Bulbs, 9 to 11 in. circum. . . . .	7 00	15 00	50 00
Bulbs, 11 to 13 in. circum. . . . .	10 00	22 50	80 00

#### L. ERABU, IMPROVED. September delivery.

Bulbs, 10 to 12 in. circum. . . . .	5 00	11 25	40 00
Bulbs, 11 to 13 in. circum. . . . .	6 50	15 00	50 00

#### L. GIGANTEUM. October delivery.

Bulbs, 10 to 12 in. circum. . . . .	6 00	12 50	45 00
-------------------------------------	------	-------	-------



# Miscellaneous Bulbs

## ALLIUMS

Attractive little bulbous plants, with bare stems, carrying close heads of little flowers. Well adapted to rock-gardens and borders.

**EASTERN LAKE.** One of the loveliest, 4 to 6 inches high, with pink flowers tinged lavender. 50 cts. for 10; \$4.50 per 100

**FALCIFOLIUM.** Large umbels of rosy purple flowers. Only grows about 3 inches tall. 50 cts. for 10; \$4.50 per 100

**NEAPOLITANUM.** A popular variety for winter cut-flowers. Excellent for naturalizing among scillas in woodlands. Bears numerous heads of white flowers during May and June. 50 cts. for 10; \$4.50 per 100

**UNIFOLIUM.** Handsome trusses of rosy pink. Grows 6 to 10 inches tall. 50 cts. for 10; \$4.50 per 100

## AMARYLLIS

### S. & W. Co.'s Giant Hybrids

Few, if any, of the bulbous plants give the amateur greater pleasure for the window-garden than these giant-flowering Amaryllis that are so easily managed. Our strain of bulbs produces vigorous stems with from four to six blooms of the most perfect form, ranging in color from pure white grounds with varied markings of rose, red, and crimson, to the richest self colors, such as scarlet, crimson, bright red, cherry, and almost maroon. Pot up bulbs, as soon as received, in good garden loam, enriched with a handful of bone fertilizer; water well and store in a dark place in a temperature of 50 to 60 degrees for four weeks until well rooted, then bring to light. Put in a sunny window and give water regularly. Bulbs potted up during October and November may be had in bloom in March. After they are through blooming, the pots may be set outdoors to allow the foliage to die down; they should be left in the pots and brought into the house in November to start for the next season.

**MIXED COLORS, Jumbo Bulbs,** suitable for 6-inch pots. 50 cts. each; \$4.50 for 10; \$40.00 per 100

## ANEMONES (Windflower)

These popular flowers of French origin are useful as decorative plants for house or garden, and for cutting. If planted outdoors in the fall they must be well protected; may also be planted in spring in well-drained soil, and will flower during the summer. *We offer extra-choice two-year bulbs only.*

**EXCELSIOR MIXTURE.** We consider this the finest strain of single-flowering Anemones as yet raised. The plants are taller in growth than the St. Brigid and more single. They contain many fine shades of blue, white, and scarlet. 75 cts. for 10; \$6.50 per 100

**HIS EXCELLENCY.** Large, bright red, semi-double, showing a black center and suggesting a red poppy. 70 cts. for 10; \$6.00 per 100

**ST. BRIGID.** (Creagh Castle Strain.) There is a wide range of rich and brilliant colors in this magnificent strain. 70 cts. for 10; \$6.00 per 100

**BLUE POPPY.** A selected strain, similar to the St. Brigid, producing large, single, Poppy-like flowers in varying shades of blue. 70 cts. for 10; \$6.00 per 100

**THE BRIDE.** A very fine pure white variety similar in form to the St. Brigid type. 70 cts. for 10; \$6.00 per 100

## BRODIAEAS

Little bulbs, native to the Pacific Coast, producing tufts of grass-like foliage and slender but strong stems, carrying umbels of wax-like flowers of great lasting quality. Excellently suited for naturalizing and thriving in almost any situation. Blooms in May and June. Plant 3 inches deep.

**CAPITATA.** Close clusters of violet-blue flowers. One of the earliest varieties to bloom. Grows 6 to 10 inches tall. 50 cts. for 10; \$4.50 per 100

**COCCINEA.** Clusters of brilliant red flowers, greatly resembling bunches of fire-crackers. Grows 1 to 2 feet tall. \$1.00 for 10; \$9.00 per 100

**GRANDIFLORA.** Flowers few but large, rich glossy purple. Unusually long lasting. 50 cts. for 10; \$4.50 per 100

**IXIODES.** Very handsome, free-blooming variety of fine yellow. Often called the "Golden Star." Grows 6 to 8 inches tall. 60 cts. for 10; \$5.50 per 100

## CALOCHORTUS

Plant just before the ground freezes in the fall, and cover with 3 or 4 inches of mulch.

These bulbs are injured by summer rains so dig as soon as ripe and hang up in a dry place in paper bags without packing material.

### Mariposa or Butterfly Tulips

These get their name from the eyes and markings in the cupped flower which resemble butterfly wings. They are glorious spring flowers, delightfully different, easy to grow.

**CLAVATUS.** Deep gold; very hardy. \$1.00 for 10; \$9.00 per 100

**LUTEUS.** Orange with brown center. 60 cts. for 10; \$5.00 per 100

**LUTEUS CITRINUS.** Yellow, black eye. 60 cts. for 10; \$5.00 per 100

**VENUSTUS OCULATUS.** Cream to white. 60 cts. for 10; \$5.00 per 100

**VENUSTUS PURPURASCENS.** Rose-pink; tall stems. 60 cts. for 10; \$5.00 per 100

### Globe Tulips

Fairy Lanterns from western woodlands which do well in eastern gardens if given shade and gritty leaf-mold; lovely when naturalized in a shady rockery.

**ALBUS.** Pure white.

**AMABILIS.** Deep yellow.

**AMCENUS.** Rose-pink.

All varieties, 70 cts. for 10; \$6.00 per 100

## CAMASSIA

Perfectly hardy bulbous plants that bloom in June, producing flower-spikes 2 to 4 feet high, bearing many star-shaped flowers, measuring 1½ to 2 inches across. Bulbs should be planted 4 to 5 inches deep, and in the case of Esculenta and Leichtlini, where mass effects are desired, 4 to 5 inches apart.

**CUSICKI.** Under good cultivation, grows to the height of 4 feet. Tall spikes of pale lavender, starry flowers with yellow anthers. \$1.75 for 10; \$15.00 per 100; \$130.00 per 1000

**ESCULENTA.** A native of the Mississippi Valley, 1½ to 2 feet high, with spikes of lovely purple, starry flowers. Very showy in mass planting. 50 cts. for 10; \$4.50 per 100; \$40.00 per 1000

**LEICHTLINI.** Similar to Esculenta, but a stronger grower. Flowers are larger and come in hues of deep blue and creamy white. \$1.00 for 10; \$9.00 per 100; \$85.00 per 1000

## CROCUS

### Autumn and Spring-flowering

We offer three distinct types of Crocuses: Those that bloom in the autumn if planted in September; the Crocus species which usually bloom in February; and the Dutch Crocuses which bloom in March and April.

### Autumn-flowering Crocus

#### Plant in September

Excellent for planting in the grass and on the borders of shrubbery. Given a sheltered and sunny position in the rock-garden, they add delightful color at a time when most rock-garden plants are out of bloom.

**MEDIUS.** Rich violet flowers, veined with purple at the base; stigmata is rich bright orange-red. \$1.75 for 10; \$15.00 per 100

**NUDIFLORUS.** Clear rich purple. A native of southern France and the Pyrenees Mountains. \$1.25 for 10; \$10.00 per 100

**PULCHELLUS.** Lavender-blue; orange-spotted throat; anthers white. \$1.25 for 10; \$10.00 per 100

**SATIVUS** (Saffron Crocus). A native of the Mediterranean section from Italy to Asia Minor. Flowers large, purplish lilac, feathered violet, with showy orange stigmata; slightly scented. Free-blooming. 50 cts. for 10; \$4.00 per 100

**SPECIOSUS.** Widely used in lawns, borders and rock-gardens. Lively violet-blue, veined, with orange-red anthers and light yellow throat. 50 cts. for 10; \$4.00 per 100

**ZONATUS.** Rose-lilac; yellow center and orange zone. 40 cts. for 10; \$3.50 per 100

### Spring-flowering Crocus

Charming for rock-garden and general planting, blooming early in the spring.

**IMPERATI.** Exterior buff, lined with purple; interior rich violet. Extremely early flowering. 75 cts. for 10; \$7.00 per 100

**KOROLKOWI.** Starry flowers of yellow, with bronze-brown flush on the outside of the petals. A gem for rock-gardens. 75 cts. for 10; \$7.00 per 100

**SIEBERI.** Very early; bright blue-purple with golden throat. 50 cts. for 10; \$4.00 per 100

**TOMASINIANUS.** Very pale lavender-blue, shading to silver-gray on the exterior. 50 cts. for 10; \$4.00 per 100

## Giant-flowering Varieties

### Extra-large bulbs

**AMETHYST.** Bright pale lavender.

**ENCHANTRESS.** Bright porcelain-blue.

**GRAND LILAS.** Beautiful shade of lilac.

**INNOCENCE.** Large; pure white.

**IVANHOE.** Rich, dark blue.

**PURPUREA GRANDIFLORA.** Deep purple-blue.

**STRIPED QUEEN.** Narrow lavender stripes on white ground.

**STRIPED BEAUTY.** Violet-blue, striped white.

**THE SULTAN.** Rich bright purple.

**YELLOW MAMMOTH.** Deep rich yellow.

Price of any of above varieties: 30 cts. for 10; \$2.50 per 100; \$22.50 per 1000

### S. & W. Co.'s Giant-flowering Mixture

From palest lilac through the shades of blue to deepest purple, striped white and deepest yellow.

30 cts. for 10; \$2.50 per 100; \$22.50 per 1000



Galanthus or Snowdrops



Erythroniums



Mertensia virginica

## CHIONODOXA (Glory of the Snow)

Beautiful early-flowering bulbous plants for mass planting, blooming about the same time as the Crocuses. The flower-spikes are about 5 inches high, and bear ten to fifteen scilla-like blooms. Plant in clumps of 20 to 25 bulbs, 3 to 4 inches deep, 2 to 3 inches apart. In this way the plants seed and soon produce a perfect mass of flowering bulbs.

**LUCILIAE.** Sky-blue flowers, white in the center.  
40 cts. for 10; \$3.00 per 100; \$25.00 per 1000

**LUCILIAE, WHITE.** White form of above.  
\$1.00 for 10; \$9.50 per 100; \$90.00 per 1000

**SARDENSIS.** This is earlier than the variety Luciliae, and the earliest deep blue flower.  
40 cts. for 10; \$3.00 per 100; \$25.00 per 1000



Fritillaria meleagris



Eranthis Hyemalis

## CYPRIPEDIUM

**ACAULE** (Pink Lady's-slipper; Moccasin Flower). An excellent subject for a damp, shady situation. It grows about 1 foot high and produces a large, showy, rose-purple bloom. Plant 3 inches deep and about 8 inches apart. Prefers a mulch of pine or hemlock needles until it becomes established.

\$1.50 for 10; \$12.00 per 100

**PUBESCENS.** This is the large yellow Lady's-slipper or Moccasin Flower. Its showy, fragrant blooms are produced at the top of a leafy stem. These little plants are very attractive planted in colonies and are excellent for the woodland path or among sheltered evergreens.

\$1.75 for 10; \$15.00 per 100

## DICENTRA SPECTABILIS

### Bleeding-Heart or Seal Flower

An old-fashioned favorite, with long racemes of graceful heart-shaped pink flowers that are always attractive. We offer only extra-strong clumps which will make fine specimen plants first year after planting.

40 cts. each; \$3.50 for 10; \$30.00 per 100

## ERYTHRONIUM (Dog's-tooth Violet)

**AMERICANUM.** Charming native woodland plants particularly suitable for the shady dell or woodland and fine for shaded corners or the rock-garden. They produce in April, small, lily-like flowers in shades of white, pink, bright yellow, rose, and cream. The beauty of the flowers is greatly enhanced by the richly mottled leaves. They like a light, rather moist, well-drained soil. The bulbs should be planted about 5 inches deep.

75 cts. for 10; \$6.00 per 100

**CITRINUM.** A native of southwestern Oregon. Heavily mottled leaves with white or soft yellow flowers having an orange center. Quite a distinct species.

75 cts. for 10; \$6.00 per 100

**GIGANTEUM.** A large, cream-colored variety with mottled leaves. Height 6 to 10 inches.

75 cts. for 10; \$6.00 per 100

**HENDERSONI.** Lavender and purple flowers with mottled leaves. Height 6 to 10 inches.

75 cts. for 10; \$6.00 per 100

**JOHNSONI.** Considered the most lovely of all Erythroniums. An exquisite soft pink with mottled leaves.

90 cts. for 10; \$8.00 per 100

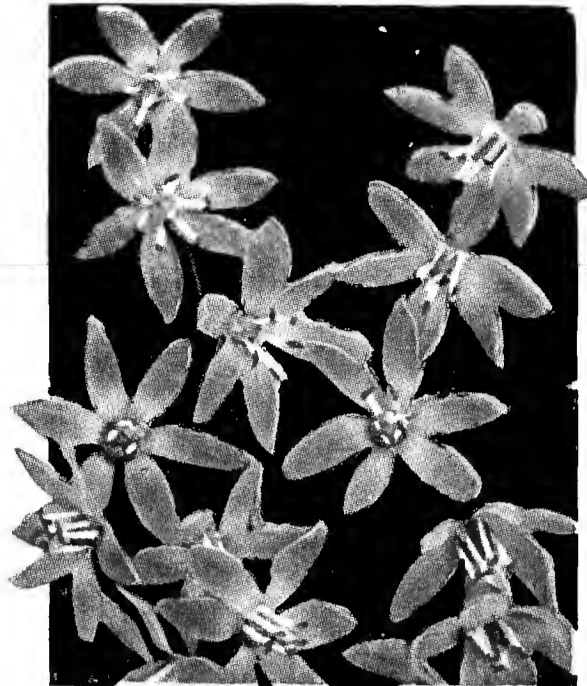


Anemone, St Brigid (Creagh Castle Strain)





Scilla campanulata, Blue



Scilla sibirica, Blue



Giant-flowering Crocus



Chionodoxa Luciliae



Ixias



Muscari armeniacum. The finest blue Grape Hyacinth

Now that stocks of this variety have increased, we recommend it as the finest and clearest blue of all the Muscari or Blue Grape Hyacinths. It is especially valuable for naturalizing with narcissi and is excellent for greenhouse forcing during the winter. The spikes attain the height of 4 to 5 inches and are well set with beautiful clear blue flowers. 35 cts. for 10; \$3.00 per 100; \$25.00 per 1000.

## ERANTHIS HYEMALIS Winter Aconite

The golden blossoms resting on an emerald-green cushion of leaves are a charming spring picture. The foliage remains long after the flowers, making the plant especially valuable in moist, shady situations. Plant firmly, 2 inches deep, about 15 bulbs to the square foot. 40 cts. for 10; \$3.50 per 100; \$30.00 per 1000

## EREMURUS

This noble and rare bulbous plant from Turkestan is one of the choicest subjects for the permanent hardy border. It thrives best in a well-drained, sheltered, sunny position, and prefers a deep sandy loam to which has been added a liberal quantity of well-rotted cow manure. A covering of 4 to 5 inches of leaves or litter will be beneficial and will save the young shoots, which start early, and are liable to be damaged by late frosts. It produces a tall, majestic flower-stalk which rises from a crowded tuft of narrow leaves and is crowned by a flower-spike 2 to 3 feet long, composed of closely set, bell-shaped flowers which are quite star-like in effect. The colors are tones of rose, yellow, and white.

**BUNGEI.** Very beautiful, deep yellow flowers in July. A strong grower, reaching a height of 6 feet. \$1.25 each; \$10.00 for 10

**ELWESI.** Beautiful soft pink blooms in June. Broad green foliage. A very vigorous-growing variety reaching a height of 10 to 12 feet. \$2.00 each; \$18.00 for 10

**ELWESI ALBUS.** Pure white form of the above. \$2.00 each; \$18.00 for 10

**HIMALAICUS.** Waxy white flowers with golden anthers. Height 6 to 8 feet. \$1.80 each; \$16.00 for 10

**HIM-ROB.** This is a hybrid between *E. himalaicus* and *E. robustus*, producing 8- to 10-foot stems with flower-spike 3 to 4 feet long, closely set with large flowers of pale silvery pink. Blooms in June. \$2.00 each; \$18.00 for 10

**ROBUSTUS.** Rosy pink flowers in June on 8- to 10-foot stems. Strong grower. \$2.50 each; \$22.50 for 10

**SHELFORD.** Coppery yellow flowers closely arranged on a 6-foot stem and almost clothing half of it. \$1.80 each; \$16.00 for 10

## FRITILLARIA IMPERIALIS Crown Imperials

Well-known hardy border plants, bearing clusters of immense, pendent, bell-shaped flowers, surmounted with a tuft of green leaves.

**MAXIMA LUTEA.** Robust; immense yellow flowers. \$3.50 for 10; \$30.00 per 100

**MAXIMA RUBRA.** Red-flowered form of the above. \$3.50 for 10; \$30.00 per 100

## FRITILLARIA MELEAGRIS

Singular, dwarf, spring-flowering plants, bearing large, pendent, bell-shaped flowers, in yellow, white, black, purple, striped and splashed, and checkered in the most curious way. They are invaluable for pot-culture, and pretty when grown in large groups in a dry situation.

**ALBA.** White. 60 cts. for 10; \$5.00 per 100; \$45.00 per 1000

**CALYPSO.** Purple. 60 cts. for 10; \$5.00 per 100; \$45.00 per 1000

**MIXED.** Select mixtures. 50 cts. for 10; \$4.00 per 100; \$35.00 per 1000

## Giant Freesias

Without doubt the most sweetly scented flower grown; a single bloom permeates the living-room with its delicate perfume.

It is estimated that about 30,000,000 million of these bulbs, both the white and the colored sorts, are produced in California every year. Of these, 95 per cent are grown by the commercial florists who have striven each year to bring their cut-flowers to the market earlier, so as to obtain an advantageous price. The result of this has been that the producers of the bulbs have been lifting them earlier every year and, in some cases, before they are thoroughly ripened. The result of this, quite frequently, has been failure with the grower to produce satisfactory blooms. Our Freesias are late dug. After you receive them, spread them out in a florist flat, store in a cool, dry place, and do not pot up until early September. They should then be well watered, stored in a cool place, and brought into the greenhouse or sun-parlor late in November.

We offer 12 of the most distinct varieties—only those which are good growers, have good-sized flowers on good stems, and are the best in their respective colors. We also offer the most desirable size bulbs for exhibition blooms in each variety. Size given denotes diameter in inches of the bulb.

**APOTHEOSE.** The finest lavender-pink. Bulbs  $\frac{3}{4}$  to  $\frac{7}{8}$  in.

60c. for 10; \$5.00 per 100; \$45.00 per 1000

**ELDER'S GIANT WHITE.** Plant Patent No. 17. The largest white, but not as early as Purity Superflora. Bulbs  $\frac{3}{4}$  to  $\frac{7}{8}$  in.

90c. for 10; \$8.00 per 100; \$75.00 per 1000

**GOLDEN DAFFODIL.** The finest rich daffodil-yellow. Bulbs  $\frac{3}{4}$  to  $\frac{7}{8}$  in.

50c. for 10; \$4.00 per 100; \$35.00 per 1000

**GOLDEN TREASURE.** Similar to Golden Daffodil, except outer part of the flower is tinged lilac. Bulbs  $\frac{3}{4}$  to  $\frac{7}{8}$  in.

50c. for 10; \$4.00 per 100; \$35.00 per 1000

**MARIE LOUISE VIOLET.** Flower is large, of a deep blue-violet color. Bulbs  $\frac{3}{4}$  in.

60c. for 10; \$5.00 per 100; \$45.00 per 1000

**MENDOTA.** Somewhat smaller and deeper in color than Golden Daffodil, but later. Bulbs  $\frac{3}{4}$  to  $\frac{7}{8}$  in.

50c. for 10; \$4.00 per 100; \$35.00 per 1000

**MISS BLANCHE BLUE.** Plant Patent No. 98. Deep rich blue. Early. Fine large flowers. Bulbs  $\frac{1}{2}$  to  $\frac{5}{8}$  in.

50c. for 10; \$4.00 per 100; \$35.00 per 1000

**MRS. MARC PETERS.** The finest deep rosy salmon-pink. Bulbs  $\frac{3}{4}$  to  $\frac{7}{8}$  in.

60c. for 10; \$5.00 per 100; \$45.00 per 1000

**PENSEROSA.** Enormous, broad-petaled flower of good substance, bright pinkish carmine with primrose throat. Bulbs  $\frac{3}{4}$  to  $\frac{7}{8}$  in.

70c. for 10; \$6.00 per 100; \$50.00 per 1000

**PURITY SUPERFLORA.** Excellent white earlier than Elder's Giant White, but not quite as large. Fine strong grower.

Bulbs  $\frac{3}{4}$  to  $\frac{7}{8}$  in.

50c. for 10; \$4.00 per 100; \$35.00 per 1000

Bulbs  $\frac{7}{8}$  in. up.

60c. for 10; \$5.00 per 100; \$45.00 per 1000

**RED RIDING HOOD.** A new variety. Rich blood-red, cadmium-yellow throat. Fine strong grower, with good-sized blooms. Bulbs  $\frac{3}{4}$  to  $\frac{7}{8}$  in.

80c. for 10; \$7.00 per 100; \$60.00 per 1000

**RUTH CHATTERTON.** A distinct new shade of Tyrian rose and pink, the color being shot with delicate lines of cadmium-yellow in varying degrees. Bulbs  $\frac{3}{4}$  to  $\frac{7}{8}$  in.

70c. for 10; \$6.00 per 100; \$50.00 per 1000

## GALANTHUS (Snowdrops)

These are particularly effective under hedges, under cedar trees, and in thin woodland. They are the first to open in the spring. They dislike being moved and should be left alone to naturalize themselves.

**ELWESII GIANT SINGLE.** Selected Bulbs. 50 cts. for 10; \$4.00 per 100; \$35.00 per 1000

## GLADIOLUS (Colvillei Types)

This type of Gladiolus is grown in the greenhouse, and is usually forced into bloom in late February and early March. It is excellent for cut-flowers.

**NYMPH.** Large-flowering, white.

**PEACH BLOSSOM.** Pale pink.

**SPITFIRE.** Bright scarlet.

**THE BRIDE.** Pure white. 80 cts. for 10; \$7.00 per 100; \$60.00 per 1000

**TRISTIS CONCOLOR.** One of the loveliest of this type, and now seen quite frequently as a pot-plant at our New York Flower Show. The flowers are creamy white, borne on long ivory stems. Excellent for forcing. \$1.25 for 10; \$10.00 per 100; \$90.00 per 1000

## IXIAS

The Ixia is a beautiful little winter-flowering bulb, with long, slender, graceful spikes of bloom. The colors are rich and varied, the center always differing from the other parts of the flower, so that the blossoms, expanding in the sun's rays, present a picture of gorgeous beauty. Very desirable for pots.

We offer selected large size bulbs

**AFTERGLOW.** Beautiful new variety with deep coppery yellow flowers, shaded salmon and deep red. 70 cts. for 10; \$6.00 per 100

**ALTHEA.** Pale cream with a dark brown center. 70 cts. for 10; \$6.00 per 100

**BEAUTY OF NORFOLK.** Light yellow with a dark center. 70 cts. for 10; \$6.00 per 100

**GOLD DROP.** Rich deep golden yellow. 70 cts. for 10; \$6.00 per 100

**LADY SLADE.** Beautiful shade of light rose-pink, carmine center. 70 cts. for 10; \$6.00 per 100

**SMILING MARY.** A bright shade of cherry-red. 70 cts. for 10; \$6.00 per 100

**FINEST MIXED.** Good outstanding colors. 60 cts. for 10; \$5.00 per 100

## LEUCOJUM VERNUM

Spring Snowflake

This pretty bulbous plant is similar to the snowdrop but of larger, stronger, and more attractive habit. In rich soil it grows to a height of 8 inches and produces, in late April, beautiful large white flowers, tipped with green, that are excellent for cutting. When once planted they take care of themselves, and should be in all hardy collections. Also do well in pots.

70 cts. for 10; \$6.00 per 100; \$50.00 per 1000

## BULBOUS IRISES DUTCH, ENGLISH and HYBRIDS OF IRIS TINGITANA

We offer below three forms of the Bulbous Irises, many of which are grown by commercial florists in large quantities and sold during February and March. Contrary to general belief, the Dutch Irises are excellent for outdoor planting and bloom during May and June. The English Irises are even more beautiful, and if planted in the hardy border where German Irises are grown, they usually bloom after the German and before the Japanese. The third type of the Bulbous Irises are what is known as Tingitana Hybrids and of these types the best known and most dependable for indoor culture is Wedgwood. We recommend the planting of Dutch and English Irises in this latitude in October, as late planting prevents early top-growth. Plant them 5 inches deep and give them the usual protection given to the perennial border.

### DUTCH IRISES

**A. Bloemaard.** Standards dark blue; falls light blue.

**Blue Horizon.** Very broad and strong. Light violet-blue standards; falls soft sky-blue, narrow orange stripe. Large, beautiful flower.

**David Bless.** Soft heliotrope-blue. Early.

**Imperator.** Uniform shade of dark purple-lilac; of good substance and size. Popular as a forcing Iris to bloom after Wedgwood.

**Indian Chief.** One of the beautiful shades of violet and bronze—standards violet, tinged bronze; falls bronze.

**White Excelsior.** Uniform pure white. Falls very broad; very good form and substance.

**Yellow Queen.** Standards and falls golden yellow. Excellent for early forcing as well as outdoor planting.

Any of the above, 80 cts. for 10; \$7.00 per 100; \$60.00 per 1000

### ENGLISH IRISES

While this Iris differs from the Dutch varieties in that it cannot be forced in bloom in a greenhouse, it is one of the finest to grow in the garden for decoration or cutting. It is hardy, easy to grow, and seldom, if ever, fails to bloom.

**Bleu Celeste.** Light lavender-blue; very delicate and effective.

**King of the Blues.** Brilliant deep purple-blue.

**Mont Blanc.** Pure white.

**Sunset.** The color of the Cattleya orchid—delicate lavender-pink.

Any of the above, 90 cts. for 10; \$8.00 per 100; \$70.00 per 1000

### IRIS, WEDGWOOD

This type of Iris is principally used for greenhouse growing and may be had in bloom in late February. Standards dark blue; falls beautiful pale blue, with yellow blotch. Flowers frequently measure 6 inches across, borne on stems 2 feet tall. Jumbo bulbs, \$1.60 for 10; \$14.00 per 100



## LEUCOCORYNE

*Ixioides odorata*

An excellent subject for a cool greenhouse, growing about 1 foot high, and bearing 4 to 6 blooms of light blue, center marked white. Slightly fragrant. The culture used for Freesias is recommended. Not hardy.

\$2.00 for 10; \$18.00 per 100

## LILY-OF-THE-VALLEY PIPS

*For Greenhouse Growing  
November Delivery*

In judging the price of our Lily-of-the-Valley, please remember that the best is the cheapest. Our Valley is bought at open prices, with instructions for a selection of the best-developed pips. Our long experience and large importations have commanded this extra selection. For **growing indoors** these pips are the best that can be planted. 25 pips \$2.50; 100 pips \$9.00; 250 pips \$21.00; 500 pips \$40.00; 1000 pips \$75.00.

*For Outdoor Planting  
November Delivery*

For outdoor planting we offer pips of **smaller size** than those used for growing Lily-of-the-Valley **indoors** and at attractive prices. Plant 4 inches apart for a solid bed. 10 pips 75 cts.; 25 pips \$1.50; 100 pips \$5.00; 1000 pips \$40.00.

## MUSCARI

Grape Hyacinth

**ARMENIACUM.** Now that stocks of this variety have increased, we recommend it as finest and clearest blue of all the Muscari. It is especially valuable for naturalizing with the narcissi and is excellent for greenhouse forcing during the winter. The spikes attain the height of 4 to 5 inches and are well set with beautiful clear blue flowers. 35 cts. for 10; \$3.00 per 100; \$25.00 per 1000

**BOTRYOIDES ALBUM.** Pure white form of *Botryoides cæruleum*, making a nice showing when contrasted with clumps of the blue Muscari. 50 cts. for 10; \$4.00 per 100; \$35.00 per 1000

**HEAVENLY BLUE.** Fragrant, brighter in color, and larger than the Botryoides. Probably the most popular of the Muscari; widely planted in beds, borders, and for naturalizing, where its greater size is of value. When once established, forms an attractive permanent planting. Does well in partial shade. 35 cts. for 10; \$3.00 per 100; \$25.00 per 1000

**PLUMOSUM.** Plume or Feathered Muscari. Instead of the characteristic grape-shaped florets, this variety produces a celosia-like plume of feathery threads, usually 4 inches long and 2 inches broad at its widest point, of bright lilac-violet. Usually 7 inches tall, but with good culture will produce stems long enough for cutting. 60 cts. for 10; \$5.00 per 100; \$45.00 per 1000

## MERTENSIA VIRGINICA

A beautiful hardy perennial particularly effective in the open border and for naturalizing in woodlands and along brook or pond. The plant grows from 1 to 2 feet high, bearing a panicle of flowers of a soft porcelain-blue shade, about 1 inch long, in short, pendent clusters. It flowers a long time, beginning with the daffodils and continuing while the May-flowering tulips are in full bloom. **Extra-heavy clumps.**

\$1.20 for 10; \$10.00 per 100

## ORNITHOGALUM

**ARABICUM.** Tall spikes made up of pure white florets, each set off by a gleaming black pistil, which makes a striking feature. Excellent for pot-culture and for gardens as far north as New York, though heavy protection is advisable. 70 cts. for 10; \$6.00 per 100

**AUREUM.** Fine, full spikes, about 12 to 15 inches tall, of a rich golden yellow such as one would like to find in hyacinths, which the spikes somewhat resemble. Recommended particularly for forcing, where 4 bulbs in a 4-inch pot may be kept in bloom from January to May. \$1.75 for 10; \$15.00 per 100

**SILVER STAR.** Similar to Thyrsoides, except that the flowers are more star-shaped and may be had in bloom a few weeks earlier in the greenhouse. One of the best of the pure white form. 70 cts. for 10; \$6.00 per 100

**THYRSOIDES.** The famous Chinchinchee of South Africa. Remarkable for its long-lasting qualities when cut, the spikes remaining in fine condition for weeks. Light straw-color, changing to pure white. Not hardy about New York, where it is recommended for forcing, but excellent for outdoor planting in the South. 70 cts. for 10; \$6.00 per 100

## OXALIS

An unrivaled winter-flowering pot-plant of the easiest culture, succeeding with everybody.

**LARGE-FLOWERING.** Flowers are large, and they may be had in blossom, by successional plantings, from October until February. Plant 6 bulbs in a 5- or 6-inch pot, water, put in a dark place for a week, then set in a sunny window. Four colors—Yellow, Pink, White, and Lavender. 40 cts. for 10; \$3.50 per 100

## RANUNCULUS

These bulbs produce large, turban-like heads of fully double flowers, in a great range of color. They excel as cut-flowers and for that purpose are recommended for greenhouse forcing. Hardy south of Washington, but about New York should be planted only in favorably located positions and heavily protected. Plant outdoors in spring, dig bulbs in the fall. Blooms in July.

**TECOLETE GIANTS, MIXTURE.** The flowers are very double, blended with giant semi-doubles. Shades of orange, red, yellow, pink, etc., abound; in fact, every desired shade is included in this mixture. 60 cts. for 10; \$5.00 per 100; \$45.00 per 1000

**TECOLETE GIANTS, YELLOW.** The same as our Tecolete Giant Mixture but a selection of yellow shades only, ranging from light straw-yellow to deep golden yellow. 70 cts. for 10; \$6.00 per 100; \$55.00 per 1000

**TECOLETE GIANTS, RED.** Another selection from the Tecolete Giant Mixture, composed of dark crimson, scarlet, orange-red, and other shades of red. 70 cts. for 10; \$6.00 per 100; \$55.00 per 1000

**TECOLETE GIANTS, GOLD.** Another selection from the Tecolete Giant Mixture, composed of deep yellow through gold to deepest orange-yellow. 70 cts. for 10; \$6.00 per 100; \$55.00 per 1000

## SCILLA CAMPANULATA

Wood Hyacinth

Bears spikes, 15 inches high, of bell-like flowers, during early May. Plant 5 or 6 inches deep in shady situations. Very effective for borders; will grow under fir or pine trees.

**ALBA MAXIMA.** Clear white, with very fine, large bells. 50c. for 10; \$4.00 per 100; \$35.00 per 1000

**BLUE QUEEN.** Erect spikes of porcelain-blue flowers; strong grower. 50c. for 10; \$4.00 per 100; \$35.00 per 1000

**EXCELSIOR.** Bright deep blue, with large bells. 50c. for 10; \$4.00 per 100; \$35.00 per 1000

**ROSE QUEEN.** Bells of soft lilac-rose. 60c. for 10; \$5.00 per 100; \$45.00 per 1000

## Scilla sibirica (The Siberian Squill)

This charming bulbous flower blooms just after the chionodoxa, connecting the flowering season of the crocus with that of the narcissi. They are fine for naturalizing under trees or in the open woodland, producing drooping, bell-like flowers on stems 3 to 4 inches in height. Blooms very well in the rock-garden. Plant 3 inches deep in shade, half-shade, or in full sun. Splendid to plant among narcissi.

**BLUE.** Splendid for massing. Jumbo Bulbs. 45c. for 10; \$4.00 per 100; \$35.00 per 1000

**SPRING BEAUTY.** Really a glorified form of Sibirica, Blue. The color is a brighter blue and the plant produces taller stems with five to six flowers from one bulb. A decided acquisition among these lovely spring-flowering bulbous plants. 80c. for 10; \$7.00 per 100; \$65.00 per 1000

**WHITE.** A variety sometimes used for interspersing with the blue sorts. 50c. for 10; \$4.50 per 100; \$40.00 per 1000

## SPIREA

November delivery

**AVALANCHE.** White variety with long spikes. Fine for forcing.

**GLADSTONE.** Large spikes of white flowers, borne on strong stems 18 inches high.

**GLORIA SUPERBA.** A recent introduction that is conspicuously beautiful with its dense, feathery plumes of dark pink flowers.

**PEACH BLOSSOM.** Shade of peach-blossom pink; free-flowering.

**QUEEN ALEXANDRA.** A popular variety on the order of Gladstone, but of a pale pink color.

Strong clumps of any of the above 5 varieties, \$1.00 each; \$9.00 for 10; \$80.00 per 100

## TRILLIUM

**GRANDIFLORUM.** This beautiful native woodland plant grows from 8 to 12 inches high and produces large white flowers, turning lilac with age. Popular for garden planting. We offer large, strong clumps. 90c. for 10; \$8.00 per 100; \$70.00 per 1000

**STYLOSUM.** Similar to the above but somewhat smaller and has pink flowers. \$1.25 for 10; \$11.00 per 100; \$100 per 1000

## TRITONIA CROCATA

This beautiful Cape Bulb is usually treated as a greenhouse plant and handled like the freesia, which it somewhat resembles in its foliage. The lively orange-red flowers are borne on slender stems in racemes and are about 2 inches across. Splendid pot-plant. 60 cts. for 10; \$5.00 per 100; \$45.00 per 1000



## *Narcissus for Naturalizing*

A good season and larger acreage have produced such an abundant crop of American-grown Narcissus that the prices have fallen to the point where everybody can plant them with a prodigal hand. And what can be more lovely in spring than broad sweeps of golden Daffodils along the garden path or under the orchard trees? Their gay faces shine in the morning light like an incarnation of spring itself!

The mixture we offer for naturalizing purposes is especially prepared to include a wide diversity of types, and will yield not only unsurpassable landscape effects but large armfuls of lovely Daffodils and Narcissus for cutting. This year they are sensationally cheap and may not be so again. We therefore strongly urge all of our patrons to plant Daffodils to the limit while the planting is good.

\$5.00 per 100; \$45.00 per 1000

◆ ◆ ◆ ALL BULBS PRODUCED ON OUR OWN MILE-FRONT DAFFODIL FARM ◆ ◆ ◆

Bulbs for  
1938

*Stumpp & Walter Co*  
NEW YORK CITY

Advance  
Offering